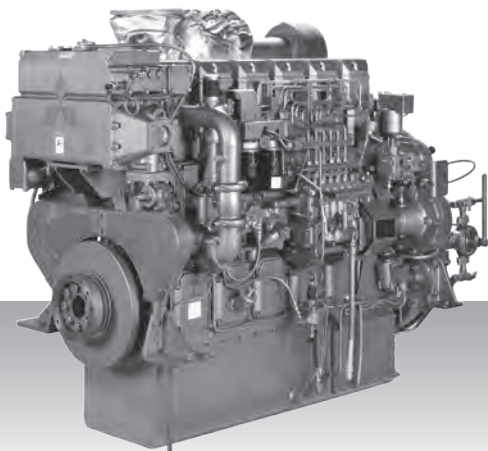


**Propulsion - IMO Tier I / non emission**  
**High speed - Propulsion package**

# S6R-MPTK



6-cylinder, 4-cycle, water cooled diesel engine,  
with direct-injection, turbocharger, air-cooler,  
build-up heat exchanger and sea water pump.

Bore x stroke (mm) : 170 x 180  
Displacement (l) : 24.51

## Commercial rating

kW	bhp	rpm	Rating	Fuel cons. l/hr*	Emission
405	543	1,600	UCD	on request	non emission
470	630	1,600	UCD	on request	non emission
520	697	1,650	HD	on request	non emission

\*Average fuel consumption according to ISO, see page 6.  
Specifications / data subject to change without prior notice.

## Product dimensions & dry weight

L (mm) : 2,122  
W (mm) : 1,202  
H (mm) : 1,615  
Dry weight (kg) : 2,950

Dimensions and weight are based on standard configuration.