

Marine Transmission TK 1200 L



STANDARD SCOPE

SAE housing #0/ #1
Flexible coupling for 14"/18" flywheel
Mechanical control valve
Oil strainer
Trolling valve (mechanical or electrical)
Oil filter mounted
Oil cooler with thermostatic bypass valve
Companion flange/bolts set
Mounting brackets
Shaft with key



Available Ratio's : 3.03, 3.48, 4.04, 4.48, 4.82
Max Input Torque 463.94, 411.71 (Kgf.m)
Dry Weight : 720 kg

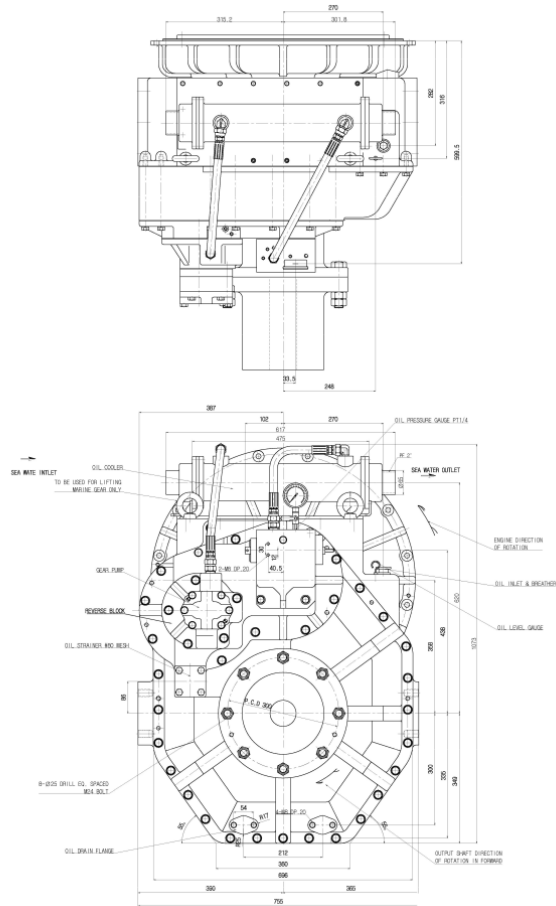
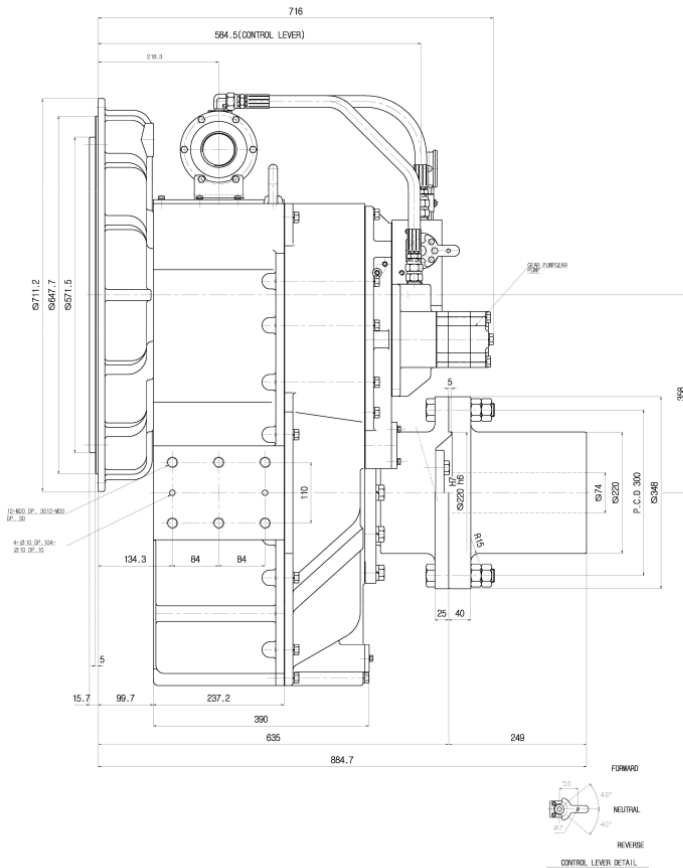
ADVANTAGES OF TK 1200L

- 01 Greater durability through change of the rubber block made of special material.
- 02 Hydraulic clutch can be easily handled outside.
- 03 Control system fitted for a small-size ship and high speed
- 04 Guaranteed durability.

CHARACTERISTICS OF SPECIFICATIONS IN KILOWATS (KW) (HORSEPOWER (HP))

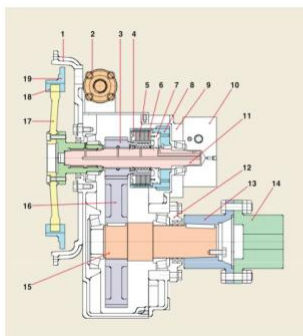
Model	Reduction Ratio	Max. Input Speed (rpm)	Max. Input Torque (Kgf.m)	INPUT RATING									Dry Weight (Kg)	Flywheel Housing (SAE No.)	Flywheel (Clutch No.)
				1600 rpm			1800 rpm			2100 rpm					
				KW	HP	PS	KW	HP	PS	KW	HP	PS			
TK 1200L	3.03, 3.48, 4.04, 4.48	2,400	463.94	762	1022	1036	858	1151	1166	1001	1342	1360	720	#0 / #1	14/18
	4.82		411.71	676	907	919	761	1021	1035	888	1191	1207			

Marine Transmission TK 1200 L



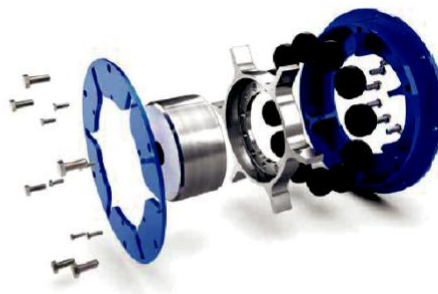
PRECAUTIONS

- Align the center of engine with marine gear (For greater effectiveness and longer life-span)
- Install the supporting bracket of marine gear.
- When assembling flange on output shaft of marine gear, be sure to align other flange accurately.
- Make sure to wash flywheel housing cover if dust should accumulate.
- When installing the cable and the remote control level, check to make sure the marine gear level is smooth.
- The oil with the viscosity equivalent to SAE#30 is recommended.
- Check the oil amount of oil before sailing.
- After 100 hours of operation check the oil, and then change every 1,000 hours.



SECTIONAL DRAWING

- | | |
|-------------------|----------------------|
| ● Wheel Cover | ● Input Shaft |
| ● Oil Cooler | ● Retainer Cover |
| ● Pinion Gear | ● Coupling |
| ● Plate, Side | ● Coupling Companion |
| ● Plate, Sintered | ● Output Shaft |
| ● Plate, Steel | ● Reduction Gear |
| ● Piston | ● Spider |
| ● Drum Gear | ● Rubber Block |
| ● Block Cover | ● Driving Ring |
| ● Control Block | |



ADVANTAGES OF FLEXIBLE COUPLING

- 01 Plug-in Connection
- 02 Heat-Resistant up to 130°C
- 03 Fail-safe solution
- 04 Lubrication free
- 05 Rubber block solution