

Marine Transmission

TK 600 S-1 / 620



STANDARD SCOPE

- SAE housing no. 1
- Flexible coupling for 14"/18" flywheel
- Mechanical control valve
- Oil strainer
- Trolling valve (mechanical or electrical)
- Oil filter mounted
- Oil cooler with thermostatic bypass valve
- Companion flange/bolts set
- Mounting brackets
- Shaft with key



Available Ratio's:	1.97, 2.53, 2.75, 3.04, 3.42
Max Input Torque 600 S-1:	197.8 (Kgf.m)
Max Input Torque 620:	222.81 / 206.9 (Kgf.m)
Dry Weight 600-S1 / 620:	420 kg / 425 kg

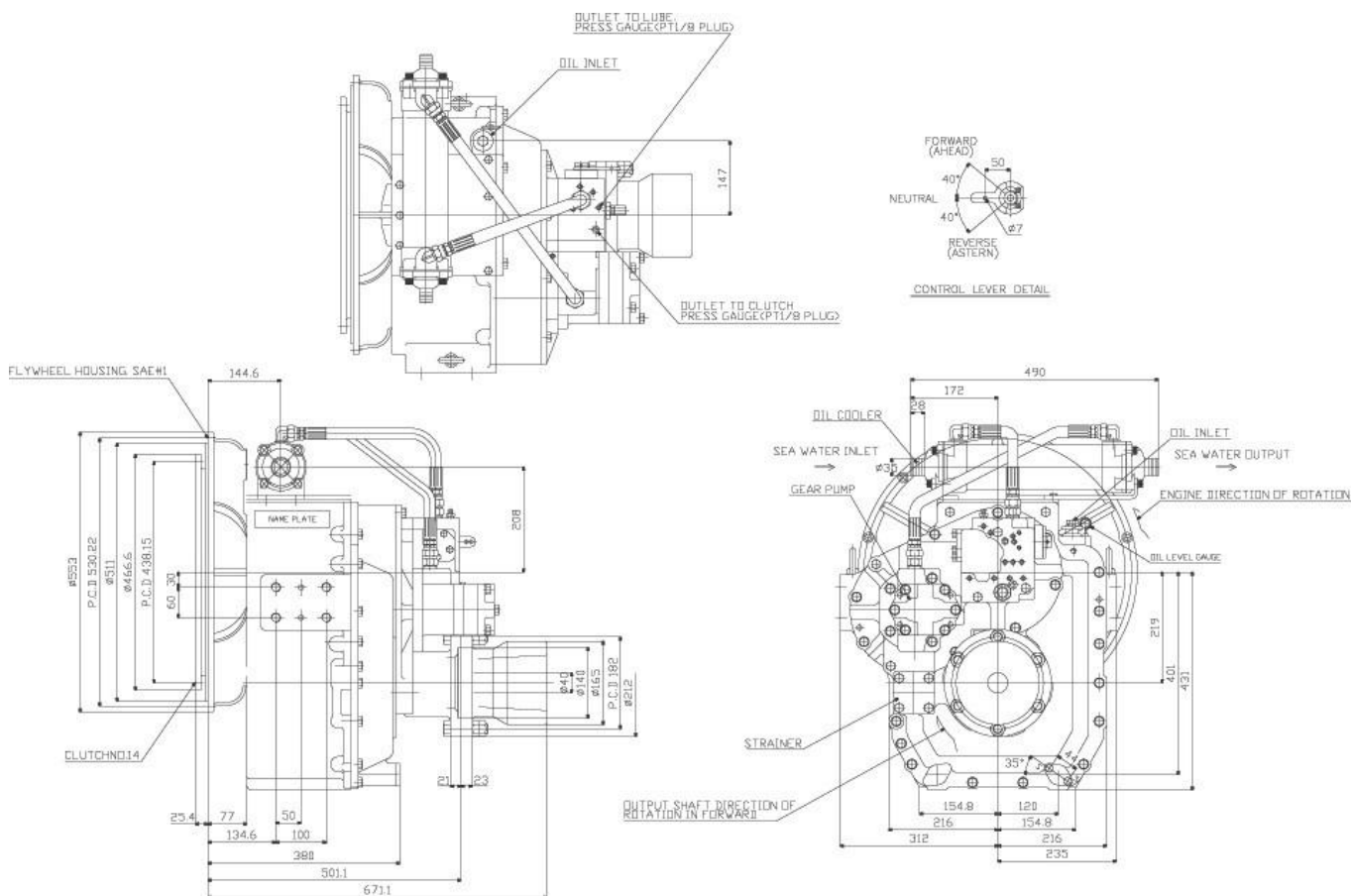
ADVANTAGES OF TK 600 S-1 / 620

- 01** Greater durability through change of the rubber block made of special material.
- 02** Hydraulic clutch can be easily handled outside.
- 03** Control system fitted for a small-size ship and high speed
- 04** Guaranteed durability.

CHARACTERISTICS OF SPECIFICATIONS IN KILOWATS (KW) (HORSEPOWER (HP))

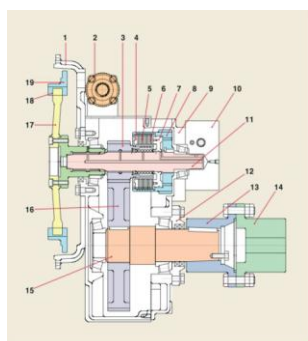
Model	Reduction Ratio	Max. Input Speed (rpm)	Max. Input Torque (Kgf.m)	INPUT RATING									Dry Weight (Kg)	Flywheel Housing (SAE No.)	Flywheel (Clutch No.)
				1600 rpm			1800 rpm			2100 rpm					
				KW	HP	PS	KW	HP	PS	KW	HP	PS			
600 S-1	1.97, 2.53, 2.75 3.04, 3.42	2600	197.8	325	435	442	365	490	497	426	571	580	420	#0 / #1	14/18
			222.81 206.9	366 340	490 456	497 462	412 383	552 513	560 520	480 446	644 598	653 606			
620	1.97, 2.53, 2.75, 3.04, 3.42												425		

Marine Transmission TK 600 S-1 / 620



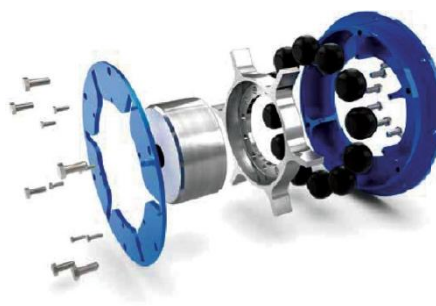
PRECAUTIONS

- Align the center of engine with marine gear (for greater effectiveness and longer lifespan).
- Install the supporting bracket of marine gear.
- When assembling flange on output shaft of marine gear, be sure to align another flange accurately.
- Make sure to wash flywheel housing cover if dust should accumulate.
- When installing the cable and the remotecontrol level, check to make sure the marine gear level is smooth.
- The oil with the viscosity equivalent to SAE#30 is recommended.
- Check the oil amount of oil before sailing.
- After 100 hours of operation check the oil, and then change every 1,000 hours.



SECTIONAL DRAWING

- | | |
|-------------------|----------------------|
| ① Wheel Cover | ⑩ Input Shaft |
| ② Oil Cooler | ⑪ Retainer Cover |
| ③ Pinion Gear | ⑫ Coupling |
| ④ Plate, Side | ⑬ Coupling Companion |
| ⑤ Plate, Sintered | ⑭ Output Shaft |
| ⑥ Plate, Steel | ⑮ Reduction Gear |
| ⑦ Piston | ⑯ Spider |
| ⑧ Drum Gear | ⑰ Rubber Block |
| ⑨ Block Cover | ⑱ Driving Ring |
| ⑲ Control Block | |



ADVANTAGES OF FLEXIBLE COUPLING

- 01 Plug-in Connection
- 02 Heat-Resistant up to 130°C
- 03 Fail-safe solution
- 04 Lubrication free
- 05 Rubber block solution