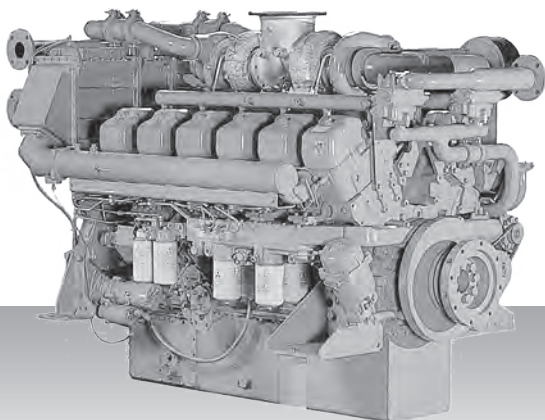


**Propulsion - IMO Tier I / non emission
High speed - Engine**

S12A2-MPTK



6-cylinder, 4-cycle, water cooled diesel engine,
with direct-injection, turbocharger and air-cooler.

Bore x stroke (mm) : 150 x 160

Displacement (l) : 33.93

Commercial rating

kW	bhp	rpm	Rating	Fuel cons. l/hr*	Emission
701	940	1,940	UCD	122.3	IMO-T1
776	1,041	2,000	HD	136.6	IMO-T1
858	1,151	2,100	MD	152.7	IMO-T1

*Average fuel consumption according to ISO, see page 6.
Specifications / data subject to change without prior notice.

Product dimensions & dry weight

L (mm) : 2,291

W (mm) : 1,418

H (mm) : 1,596

Dry weight (kg) : 3,720

Dimensions and weight are based on standard configuration.