

## STANDARD EQUIPMENT

# MAS 1560 - S16 R MPTA



### Fuel System

Fuel feed pump  
Change over type fuel filters  
Fuel injection pump  
Shielded fuel injection lines

### Lubricating Oil System

Oil pressure alarm switch  
Full-flow lubricating oil filters (change over type)  
By-pass filter (change over type)  
Oil cooler with thermostat

### Cooling System

Fresh water pump  
Thermostats with by-pass

### Electric System

Starter motor  
Alternator 30 Amps

### Inlet and Exhaust System

Turbo chargers MITSUBISHI  
Inlet air main fold with air cleaner  
Dry type exhaust main fold with vertical outlet, counter flange

### Other Standard Equipment

Hydraulic governor  
Mounting brackets

### Alternator

Stamford type HMC  
Engine and alternator are mounted on a welded steel base frame, installed on vibration dampers

## TECHNICAL DATA

Power	Cylinders	Diameter x Bore	Total Cylinder Capacity	Injection System	Starting System	Fly head	Dry Weight
50 Hz - 1710 Kva - 1500 Rpm 60 Hz - 1908 Kva - 1200 Rpm 60 Hz - 1524 Kva - 1800 Rpm	16 cylinders in V	170x180 mm	65.4 liters	Direct	24 Volts bi-polar	SAE 21 / SAE 1	11900 Kg

## Options

### Classification

BV, LRS, DNV classification (and other). IMO classification

### Engine cooling system

Heat exchanger fresh water / raw water (turbo lair or combined)  
Plate cooler  
Box cooler  
Keel cooling  
Mounted seawater pump  
Electric seawater pump

### Exhaust

Flexible expansion joint  
Silencer 22 db or 35 db or others  
Spark-arrestor

### Lubricating oil system

Manual oil drain pump  
Electric oil drain pump  
Pre-lubricating pump  
Emergency oil pump

### starting system

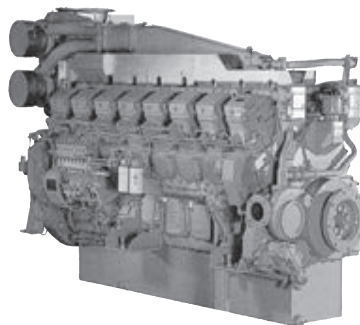
Air starting  
Electric compressor set  
Air / electrical combined starting

### Instrumental panel

Single- or multi-stations  
Mechanical or electronic remote control

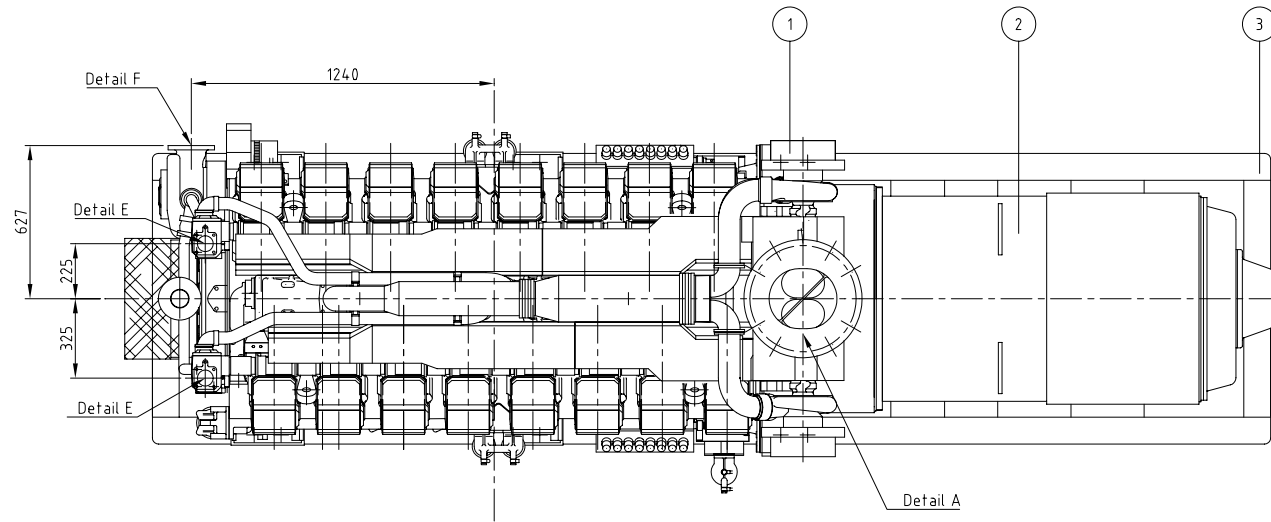
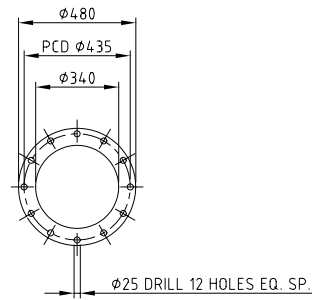
### Alternator

Other brands like LEROY SOMER, etc...

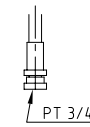


**S16R-MPTA** 16-cylinder, 4-cycle, Water cooled, Diesel Engine Direct-injection, Turbocharged with Air-cooler  
Bore x Stroke (mm) : 170 x 180  
Displacement (L) : 65.37

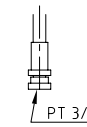
DETAIL A  
EXHAUST GAS OUTLET



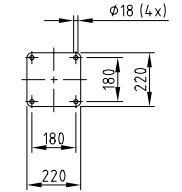
DETAIL B (NON SCALE)  
FUEL PIPE JOINT  
ON BOTH SIDES



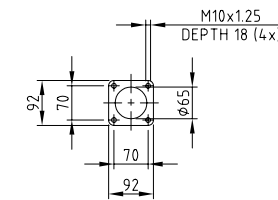
DETAIL C (NON SCALE)  
FUELLEAK OFF PIPE JOINT  
ON BOTH SIDES



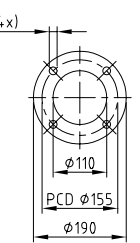
DETAIL D  
MOUNTING DETAIL VIBRATION DAMPER



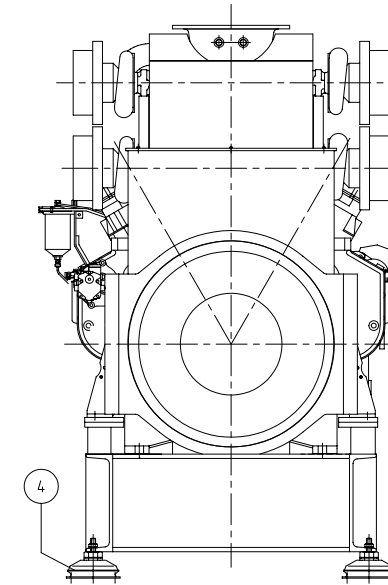
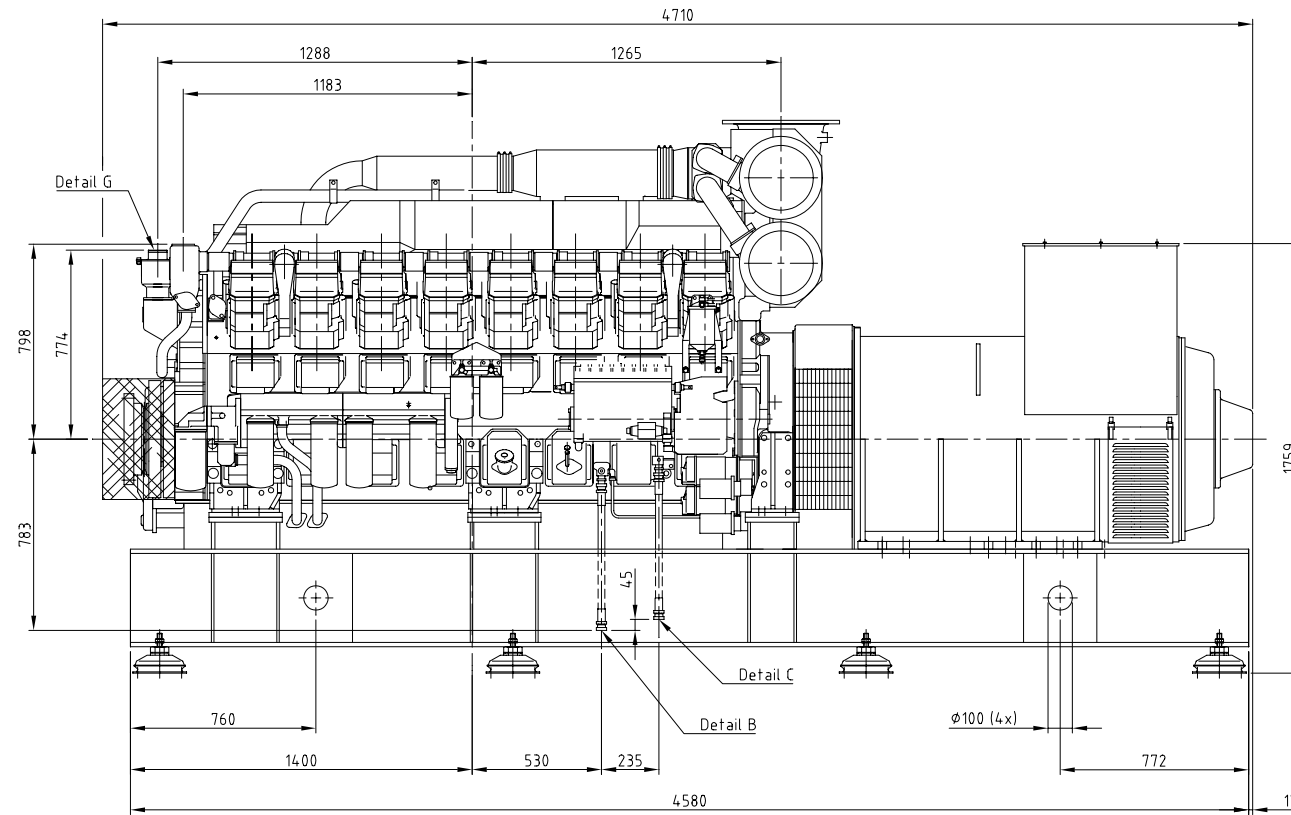
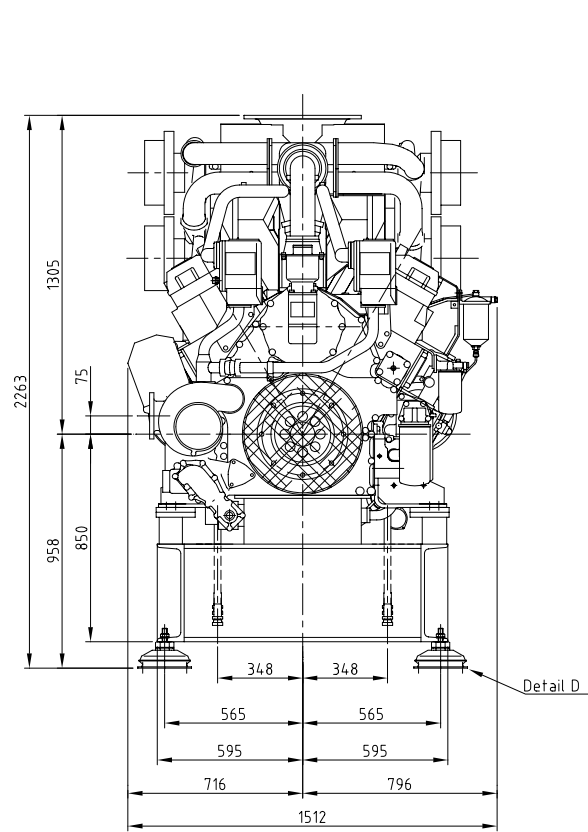
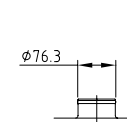
DETAIL E (1:10)  
F/W OUTLET



DETAIL F (1:10)  
F/W INLET



DETAIL G (1:10)  
BREATHER OUTLET



NOTE:  
UNDER EVERY FILTER A DRIPTRAY WILL BE INSTALLED  
ALL ROTATING PARTS WILL BE COVERED

FOR INFORMATION ONLY

Pos No.	QUAN TITY	DESCRIPTION	TYPE	MATERIAL
4	8	VIBRATION DAMPER	TV 063 I/A	
3	1	FRAME		STEEL
2	1	GENERATOR	HCM734G1	
1	1	ENGINE	S16R-MPTA	

No.:	Date:	Description of change	
Subject:		MAS 1560	
		1500 rpm	
Type:	S16R-MPTA HCM734G1	Project No.:	
Drawn:	S.K.	Checked:	
Date:	February 1999	Date:	
Scale:		1:20	
Size:		A2	
MHI EQUIPMENT EUROPE B. V.		American projection	
EUROPEAN SALES AND SERVICE SUBSIDIARY OF MITSUBISHI HEAVY INDUSTRIES LTD. - JAPAN		Drawing number:	
		B00632-0	
		all rights reserved	
		Rev.:	0
		Sheet No.:	1/1