

# MAS 765 - S12A2 MPTA

## Fuel System

Fuel feed pump  
Change over type fuel filters  
Fuel injection pump  
Shielded fuel injection lines

## Lubricating Oil System

Oil pressure alarm switch  
Full-flow lubricating oil filters (change over type)  
By-pass filter (change over type)  
Oil cooler with thermostat

## Cooling System

Fresh water pump  
Thermostats with by-pass

## Electric System

Starter motor  
Alternator 30 Amps

## Inlet and Exhaust System

Turbo chargers MITSUBISHI  
Inlet air main fold with air cleaner  
Dry type exhaust main fold with vertical outlet, counter flange

## Other Standard Equipment

Hydraulic governor  
Mounting brackets

## Alternator

Stamford type HMC  
Engine and alternator are mounted on a welded steel base frame, installed on vibration dampers

## TECHNICAL DATA

Power	Cylinders	Diameter x Bore	Total Cylinder Capacity	Injection System	Starting System	Fly head	Dry Weight
50 Hz –813 Kva –1500 Rpm 60 Hz –654 Kva –1200 Rpm 60 Hz –913 Kva –1800 Rpm	12 cylinders in V	150x160 mm	33.9 litres	Direct	24 Volts bi-polar	SAE 18 / SAE 1	6800 kg

## Options

### Classification

BV, LRS, DNV classification (and other). IMO classification

### Engine cooling system

Heat exchanger fresh water / raw water (turbo lair or combined)  
Plate cooler  
Box cooler  
Keel cooling  
Mounted seawater pump  
Electric seawater pump

### Exhaust

Flexible expansion joint  
Silencer 22 db or 35 db or others  
Spark-arrestor

### Lubricating oil system

Manual oil drain pump  
Electric oil drain pump  
Pre-lubricating pump  
Emergency oil pump

### starting system

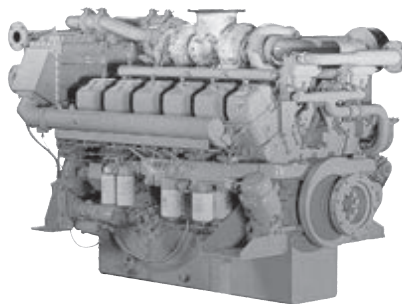
Air starting  
Electric compressor set  
Air / electrical combined starting

### Instrumental panel

Single- or multi-stations  
Mechanical or electronic remote control

### Alternator

Other brands like LEROY SOMER, etc...



**S12A2-MPTA** 12-cylinder, 4-cycle,  
Water cooled, Diesel Engine  
Direct-injection,  
Turbocharged with Air-cooler  
Bore x Stroke (mm) : 150 x 160  
Displacement (L) : 33.93

