

MAS 800 - S12A2 MPTK

Fuel System

Fuel feed pump
Change over type fuel filters
Fuel injection pump
Shielded fuel injection lines

Lubricating Oil System

Oil pressure alarm switch
Full-flow lubricating oil filters (change over type)
By-pass filter (change over type)
Oil cooler with thermostat

Cooling System

Fresh water pump
Thermostats with by-pass

Electric System

Starter motor
Alternator 30 Amps

Inlet and Exhaust System

Turbo chargers MITSUBISHI
Inlet air main fold with air cleaner
Dry type exhaust main fold with vertical outlet, counter flange

Other Standard Equipment

Hydraulic governor
Mounting brackets

Alternator

Stamford type HMC
Engine and alternator are mounted on a welded steel base frame, installed on vibration dampers

TECHNICAL DATA

Power	Cylinders	Diameter x Bore	Total Cylinder Capacity	Injection System	Starting System	Fly head	Dry Weight
50 Hz –849 Kva –1500 Rpm 60 Hz –662 Kva –1200 Rpm 60 Hz –994 Kva –1800 Rpm	12 cylinders in V	150x160 mm	33.9 litres	Direct	24 Volts bi-polar	SAE 18 / SAE 1	7100 Kg

Options

Classification

BV, LRS, DNV classification (and other). IMO classification

Engine cooling system

Heat exchanger fresh water / raw water (turbo lair or combined)
Plate cooler
Box cooler
Keel cooling
Mounted seawater pump
Electric seawater pump

Exhaust

Flexible expansion joint
Silencer 22 db or 35 db or others
Spark-arrestor

Lubricating oil system

Manual oil drain pump
Electric oil drain pump
Pre-lubricating pump
Emergency oil pump

starting system

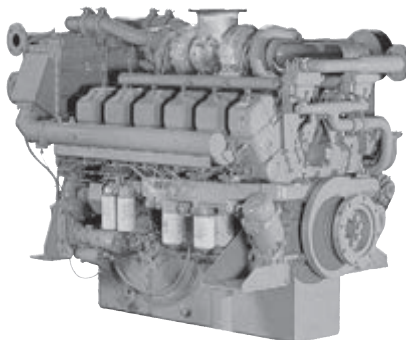
Air starting
Electric compressor set
Air / electrical combined starting

Instrumental panel

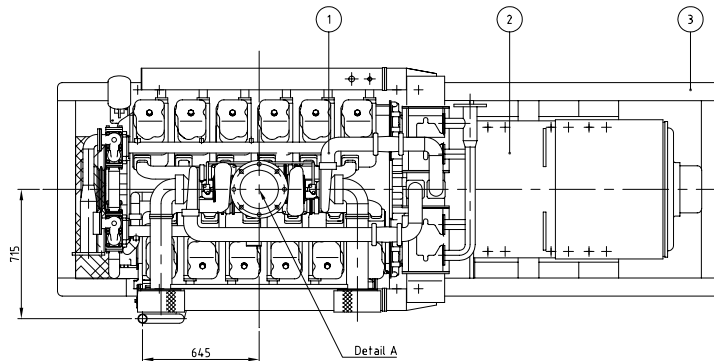
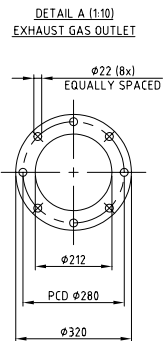
Single- or multi-stations
Mechanical or electronic remote control

Alternator

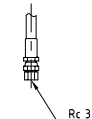
Other brands like LEROY SOMER, etc...



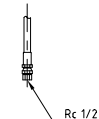
S12A2 MPTK 12-cylinder, 4-cycle, Water cooled, Diesel Engine Direct-injection, Turbocharged with Air-cooler
Bore x Stroke (mm) : 150 x 160
Displacement (L) : 33.93



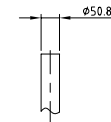
DETAIL B (NON SCALE)
FUEL PIPE JOINT



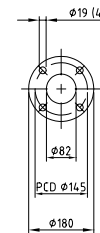
DETAIL C (NON SCALE)
FUELLEAK OFF PIPE JOINT



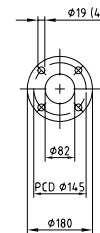
DETAIL D (1:10)
BREATHER



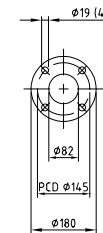
DETAIL E (1:10)
F/W INLET



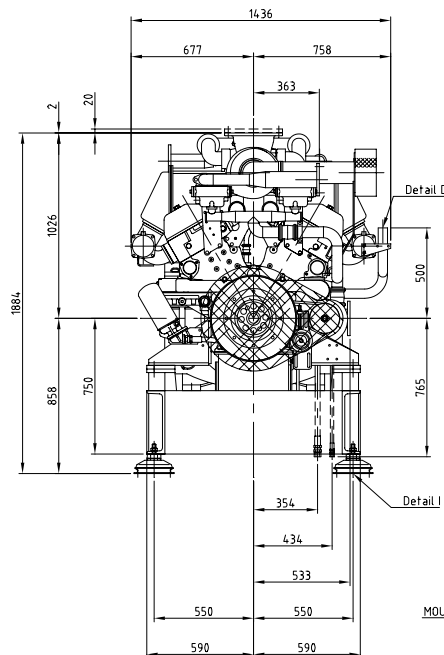
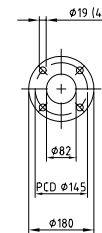
DETAIL F (1:10)
F/W OUTLET



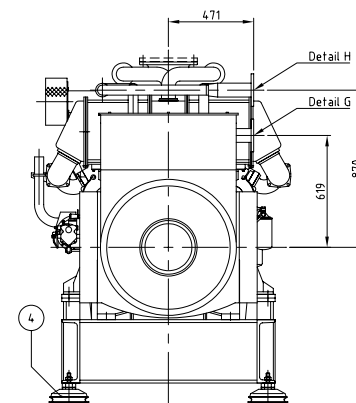
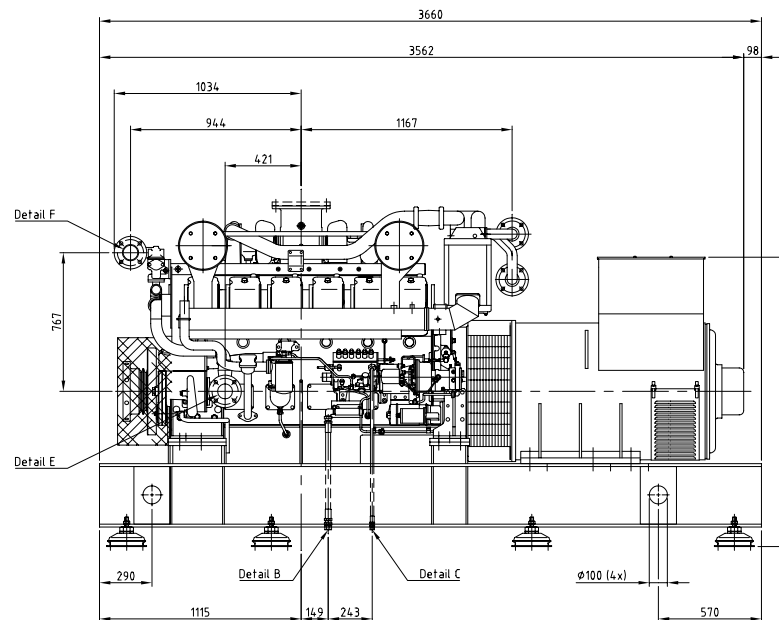
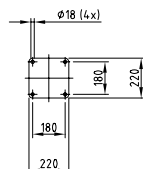
DETAIL G (1:10)
S/W INLET



DETAIL H (1:10)
S/W OUTLET



DETAIL I
MOUNTING DETAIL VIBRATION DAMPER



NOTE:
UNDER EVERY FILTER A DRIPTRAY WILL BE INSTALLED
ALL ROTATING PARTS WILL BE COVERED

FOR INFORMATION ONLY

4	8	VIBRATION DAMPER	TV063 I/A	
3	1	FRAME		STEEL
2	1	GENERATOR	HCM634JI	
1	1	ENGINE	SI2A2-MPTK	
POS NO.	QUAN TITY	DESCRIPTION	TYPE	MATERIAL

No.:	Date:	Description of change	
Subject:		MAS 800	1500 rpm
Type: SI2A2-MPTK HCM634JI	Project No:	Filename: B00738-0	Rev: 0
Drawn: G.J.G.	Checked:	Scale: 1:20	
Date: March 1999	Date:	Size: A2	
MHI EQUIPMENT EUROPE B. V.		American projection	Drawing number: B00738-0
EUROPEAN SALES AND SERVICE SUBSIDIARY OF MITSUBISHI HEAVY INDUSTRIES LTD. - JAPAN			Sheet No: 1/1
All rights reserved			