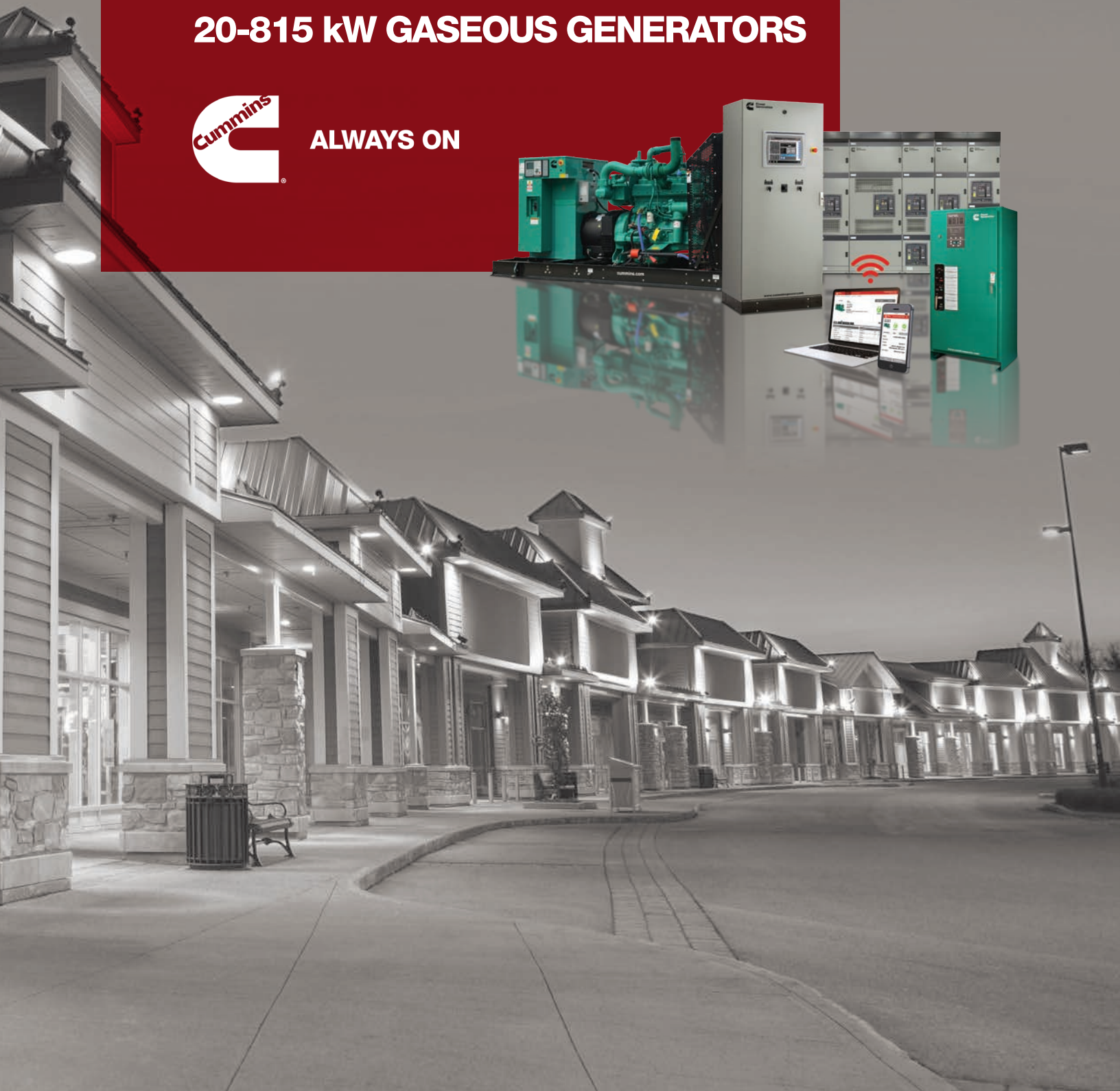


# STANDBY DEMAND RESPONSE GENERATORS.

20-815 kW GASEOUS GENERATORS



ALWAYS ON



# INTEGRATED POWER

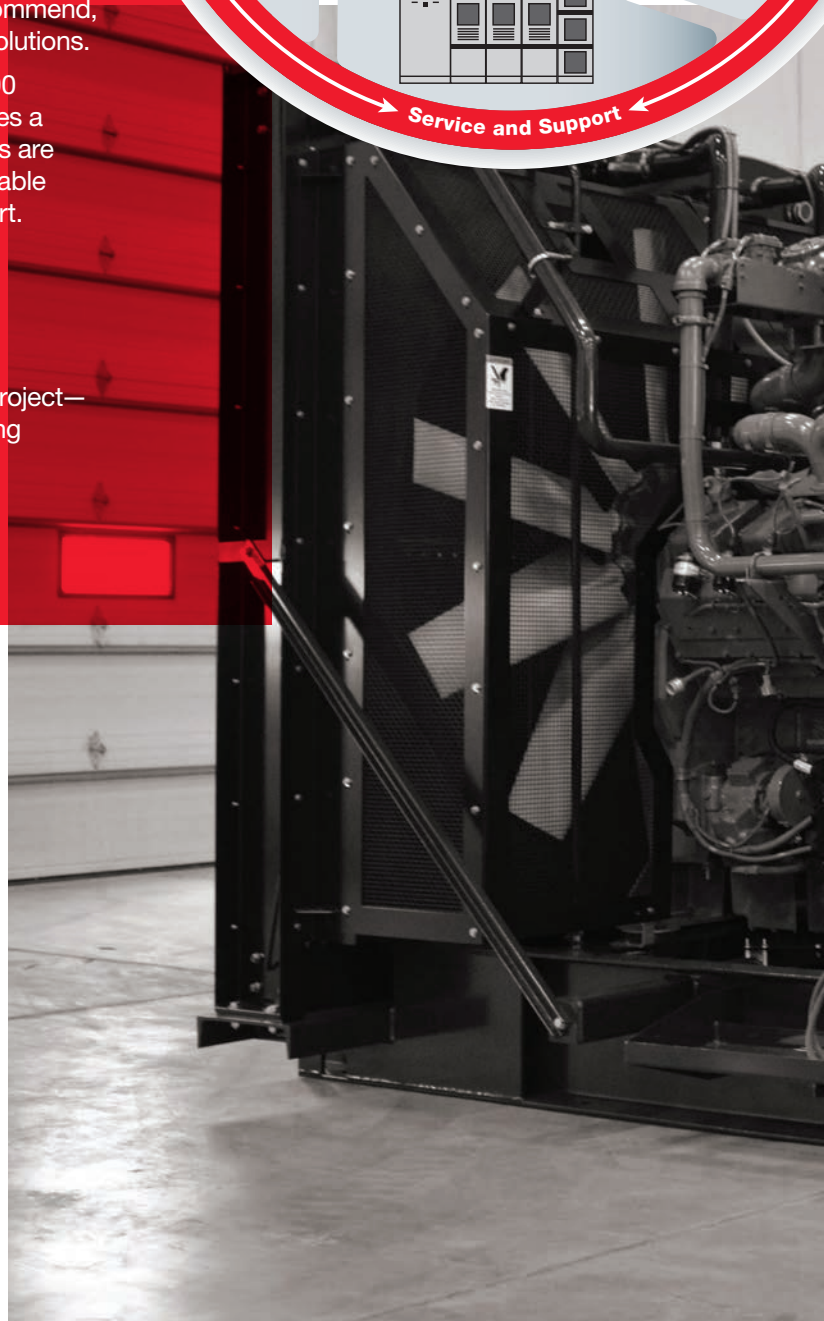
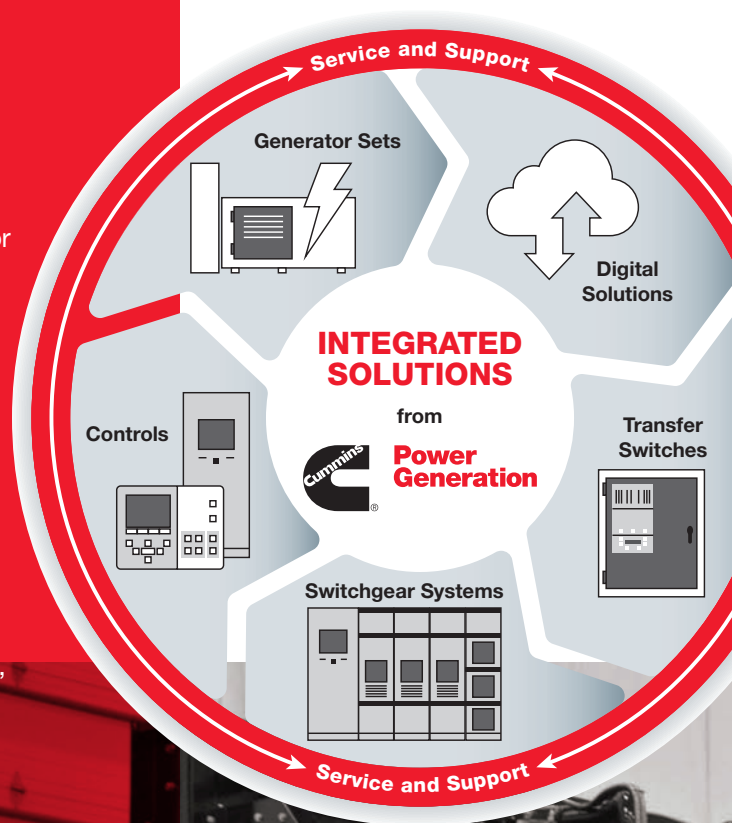
For decades, Cummins has been designing, manufacturing, commissioning and providing service for superior integrated power systems solutions, including generator sets, transfer switches, paralleling systems and remote monitoring. Our expertise goes beyond backup power to include prime power, distributed generation, combined heat and power (CHP) systems and trigeneration systems.

When you buy from Cummins, you're not just buying products; you're buying access to our experienced people. Cummins designers, application engineers and technical resources around the world are power generation "gurus" who are knowledgeable about your businesses, skilled at diagnosing situation needs and are able to recommend, engineer and commission appropriate power solutions.

Our global network of 500 distributors and 8,000 dealer locations across 190 countries guarantees a face-to-face relationship whenever our products are operating, providing you with fast access to reliable service, engineering expertise and parts support.

With the combined forces at Cummins, you partner with a single organization that has all the products and people it takes to customize solutions to deliver the power you need.

We are with you every step of the way for any project—scoping, designing, installing and commissioning and aftermarket service and support.





# WHAT MAKES US DIFFERENT?

Cummins Power Generation is about more than innovative technologies meeting your needs. The key difference is our people, who live by a simple set of rules we call “The Three Rs.”

## **RELIABILITY**

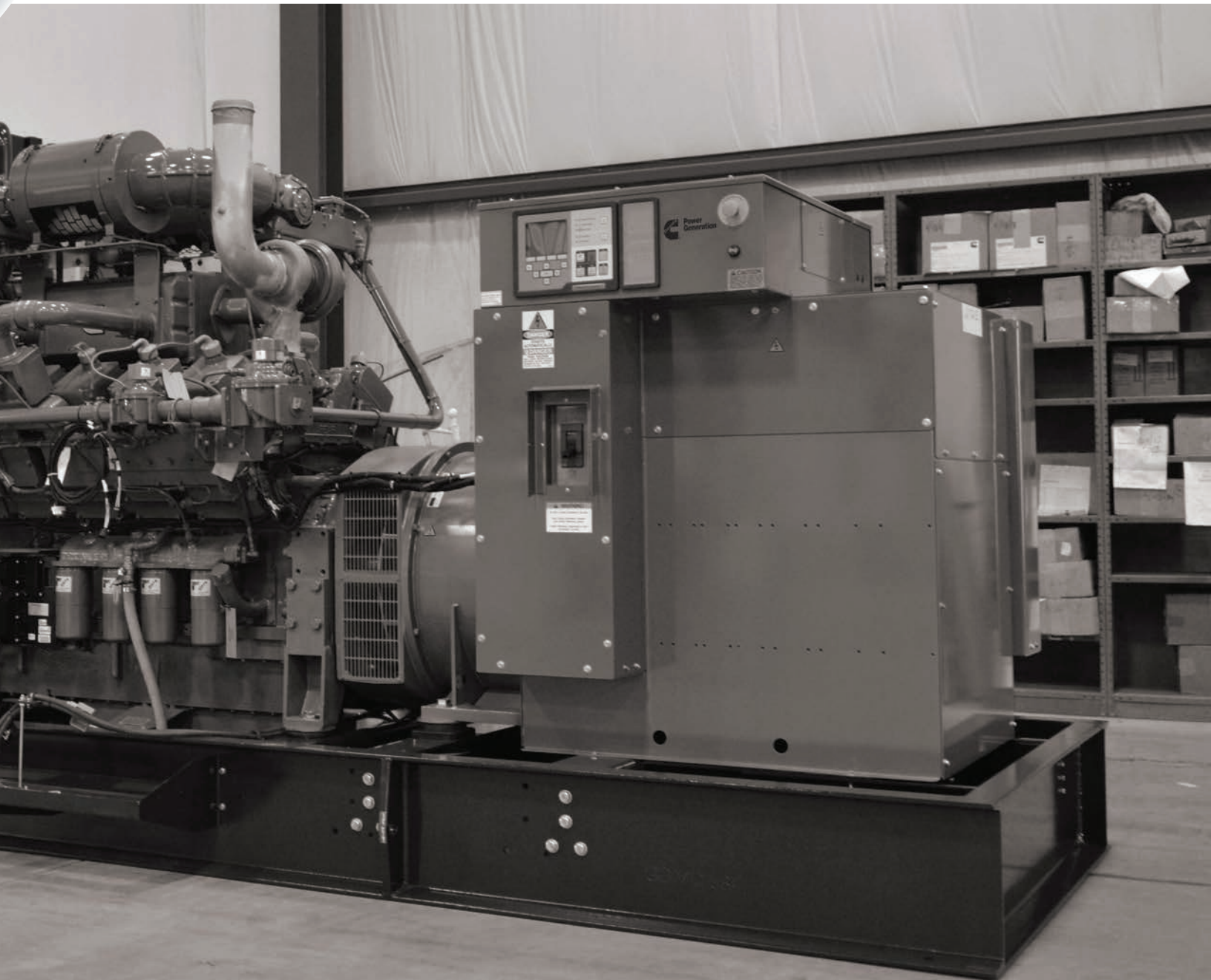
When you need real power, you can depend on us to deliver unrivaled reliability. We do what we say we will, and more. We keep our promises.

## **RELATIONSHIPS**

At Cummins you are in touch with real people you can trust and rely on. Wherever and whenever you need us, we'll be there for you.

## **RESPONSIVENESS**

We strive to provide same-day answers, turnkey solutions, quick delivery, start-up and a phone that is answered 24 hours a day, seven days a week.



# 20-815 KW GASEOUS GENERATOR SETS

Cummins 20-815 kW gaseous generator sets are the industry benchmark for quality, reliability and performance. Continued innovation and time-tested engineering quality mean these systems provide the power your industrial and commercial application needs when you need it, every time.



## RELIABLE ENGINE

- Legendary Cummins engine for reliable power\*
- Four-cycle spark-ignited for improved power
- Closed-loop electronic fuel system for improved performance
- Fully supported by Cummins distribution network

\*Except C200N6

## FEATURE-RICH CONTROL

- Current and power metering for load analysis
- Exercise function for improved dependability
- AmpSentry™ protective relay electronic overcurrent protection for improved reliability
- Auto Mains Failure (AMF) for simpler installation
- Battery monitoring, testing features and smart-starting allow for greater power management
- Network communication interfaces for integration flexibility
- Genset to genset paralleling available
- Utility-rated paralleling with PowerCommand® 3.3 control on 125-815 kW

## RUGGED CUMMINS ALTERNATOR

- Brushless alternator for improved power quality and reduced maintenance options and Class H insulation rated with 120°, 105° and 80° C temperature rises that meet or exceed UL requirements
- Alternators capable of 80° and 105° C temperature rise are typically larger, which means they not only meet UL requirements but also run cooler for a longer service life and provide better motor starting performance
- Heavy-duty industrial design for robust performance
- Single-phase and three-phase options
- Anti-condensation heater for high-humidity regions

## EASY FUEL SWITCHOVER ON 20-150 KW

- Single fuel runs on either natural gas or propane
- Single fuel can be switched on the fly with only a software change through the control panel
- Optional fuel auto-changeover for critical applications where secondary fuel is required



## EASY REMOTE MONITORING

- PowerCommand® 500/550 with user-friendly, icon-based graphical interface
- Network communication interfaces for integration flexibility
- Remote monitoring and control of generator sets, transfer switches and expandable I/O modules
- Remote monitoring, diagnostics and troubleshooting and email or text notifications
- Remotely monitor up to 12 devices, including the generator, transfer switch and other devices
- Store and view data and event logs

## THREE OR MORE CIRCUIT BREAKER DESIGN WITH OPTIONAL 100% RATED BREAKERS

- Use one breaker for critical applications, one for non-critical applications and one for load banking
- Optional 100% rated LSI circuit breakers help reduce total project cost by fully utilizing the breaker capacity, reducing size of the wires and achieving selective coordination much more easily than thermo-magnetic breakers
- Electronically operated circuit breaker availability for ease in paralleling

### 20-150 KW

- Advanced all-aluminum sound attenuation design
- 180-mph wind rating, ideal for coastal applications or other areas where severe weather is a factor

### 200-815 KW

- Galvannealed steel construction
- Aluminum construction offered for corrosive environments

## ADVANCED ENCLOSURES FOR SUPER QUIET OPERATION

- Super-durable powder coat for corrosion protection
- Tested with UL2200 water ingress test to ensure the generator's performance in wet environments
- Options for weather, sound level 1 or upgrade to level 2 sound attenuation package for added performance
- Complete side-access panels and key maintenance items designed for easy accessibility and maintenance



## SMOOTH OPERATION IN EXTREME CONDITIONS

- Entire genset as a system performs at ambient temperatures up to 50° C or 120° F even with the enclosure on
- Optional cold weather packages for temperatures between 0 and 40° F or an extreme cold weather package for conditions below 0° F

## CERTIFICATION AND COMPLIANCE

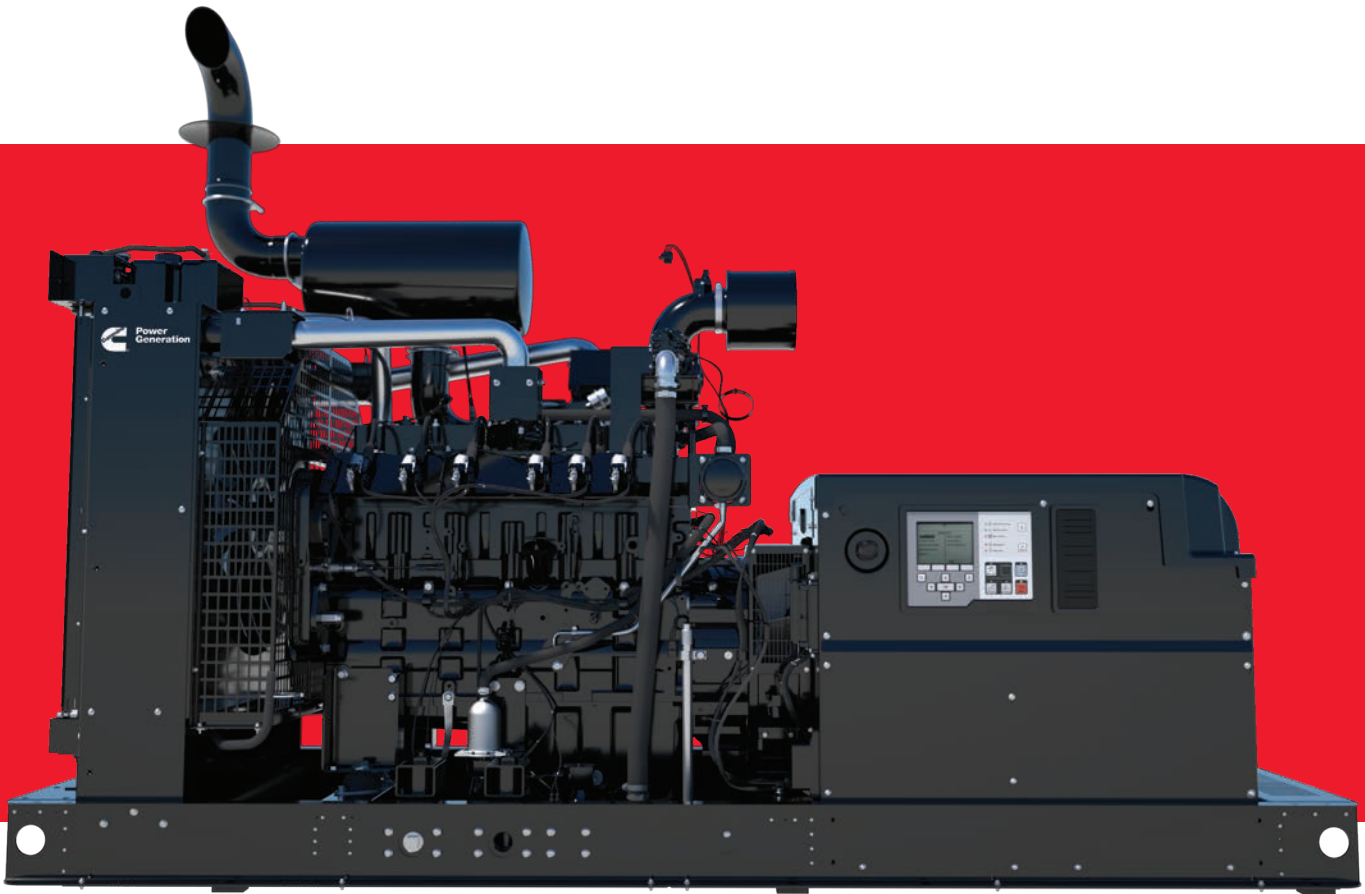
- Accepts full-rated load in single step
- NFPA110 capable for Level 1 Type 10 Systems
- CSA B149 compliance optional
- EPA emissions, UL2200, CSA22.2
- IBC Seismic 2012, OSHPD - 20-150 kW

## ADVANCED FEATURES

Besides reliability and low noise that ensure a quiet, neighborhood-friendly experience, our advanced systems also feature:

- Ease of installation and servicing
- Superior block loading capabilities
- Stable power output that protects your sensitive electronics
- Convenient remote monitoring from anywhere you have an internet connection
- Factory-certified gensets
- Specified models demand response ready





## 20-150 KW RANGE OF SWITCHABLE NATURAL GAS OR PROPANE GENERATORS

Available Voltages		1-Phase:	3-Phase:				
		120/240	120/208	120/240	277/480	347/600	127/220 <sup>4</sup>
Model Name	60 Hz Standby kW	Emissions Certification	Engine Platform	dB(A) <sup>1</sup>	Length x Width x Height mm (in) <sup>2</sup>	Weight kg (lb) <sup>3</sup>	
C20N6	20	EPA	QSJ2.4G	66	1829 (72) x 864 (34) x 1156 (45.5)	485 (1070)	
C25N6	25	EPA	QSJ2.4G	67	1829 (72) x 864 (34) x 1156 (45.5)	503 (1109)	
C30N6	30	EPA	QSJ2.4G	62	2388 (94) x 864 (34) x 1156 (45.5)	558 (1231)	
C36N6	36	EPA	QSJ2.4G	65	2388 (94) x 864 (34) x 1156 (45.5)	587 (1294)	
C40N6	40	EPA	QSJ2.4G	65	2388 (94) x 864 (34) x 1156 (45.5)	615 (1356)	
C45N6	45	EPA	QSJ5.9G	69	3023 (119) x 1016 (40) x 1473 (58)	989 (2180)	
C50N6	50	EPA	QSJ5.9G	69	3023 (119) x 1016 (40) x 1473 (58)	989 (2180)	
C60N6	60	EPA	QSJ5.9G	70	3023 (119) x 1016 (40) x 1473 (58)	1103 (2431)	
C70N6	70	EPA	QSJ5.9G	70	3023 (119) x 1016 (40) x 1473 (58)	1111 (2449)	
C80N6	80	EPA	QSJ5.9G	71	3023 (119) x 1016 (40) x 1473 (58)	1173 (2587)	
C100N6	100	EPA	QSJ5.9G	71	3023 (119) x 1016 (40) x 1473 (58)	1233 (2719)	
C125N6	125	EPA	QSJ8.9G	71	4061 (160) x 1016 (40) x 1836 (72)	1791 (3940)	
C150N6	150	EPA	QSJ8.9G	71	4061 (160) x 1016 (40) x 1836 (72)	1791 (3940)	

<sup>1</sup> Sound Attenuated enclosure level 2.

<sup>2</sup> Dimensions vary by enclosure level. Dimensions listed are for sounds attenuated enclosure level 1.

<sup>3</sup> Weights above are average. Actual weight varies with product configuration.

<sup>4</sup> 127/220 Voltage not available on QSJ2.4G Engine Platform Models.

# 130-815 KW RANGE OF NATURAL GAS OR PROPANE ONLY GENERATORS\*

Model Name	60 Hz		Emissions Certification	Engine Platform	dB(A)	Length x Width x Height mm (in)	Weight kg (lb)
	Standby kW	Demand Response kW					
C175N6	175	-	-	GTA8.3G	75	4572 (180) x 1016 (40) x 1829 (72)	2041 (4500)
C200N6	200	-	EPA+	11.1L PSI	72	4039 (159) x 1524 (60) x 2159 (85)	3724 (8210)
C200N6 (Propane)	130	-	EPA	11.1L PSI		4039 (159) x 1524 (60) x 2159 (85)	3724 (8210)
C250N6	250	-	EPA+	GTA855E	73	7137 (281) x 1778 (70) x 2413 (95)	4649 (10,250)
C300N6	300	-	EPA+	GTA855E	73	7137 (281) x 1778 (70) x 2413 (95)	4999 (11,020)
C350N6	350	-	EPA	KTA19SLB	75	7137 (281) x 1778 (70) x 2413 (95)	5348 (11,790)
C400N6	400	-	EPA	GTA28E	77	7772 (306) x 2946 (116) x 2591 (102)	9335 (20,580)
C450N6	450	-	EPA	GTA28E	77	7772 (306) x 2946 (116) x 2591 (102)	9335 (20,580)
C500N6B	500	-	EPA	GTA28E	77	7772 (306) x 2946 (116) x 2591 (102)	9335 (20,580)
C550N6	550	500	EPA+	GTA38E	76	8636 (340) x 2591 (102) x 3226 (127)	10,528 (23,210)
C550N6 (Propane)	335	-	EPA+	GTA38E		8636 (340) x 2591 (102) x 3226 (127)	10,528 (23,210)
C600N6	600	-	EPA+	GTA50E	78	9271 (365) x 2591 (102) x 3226 (127)	12,819 (28,260)
C635N6	635	-	-	GTA38	76	8636 (340) x 2591 (102) x 3226 (127)	10,528 (23,210)
C650N6	650	600	EPA	GTA50E	78	9271 (365) x 2591 (102) x 3226 (127)	12,819 (28,260)
C690N6	690	-	-	GTA38	78	8636 (340) x 2591 (102) x 3226 (127)	10,528 (23,210)
C750N6	750	700	EPA	GTA50E	78	9271 (365) x 2591 (102) x 3226 (127)	12,819 (28,260)
C760N6	760	-	-	GTA50	78	9271 (365) x 2591 (102) x 3226 (127)	12,819 (28,260)
C815N6	815	-	-	GTA50	78	9271 (365) x 2591 (102) x 3226 (127)	12,819 (28,260)

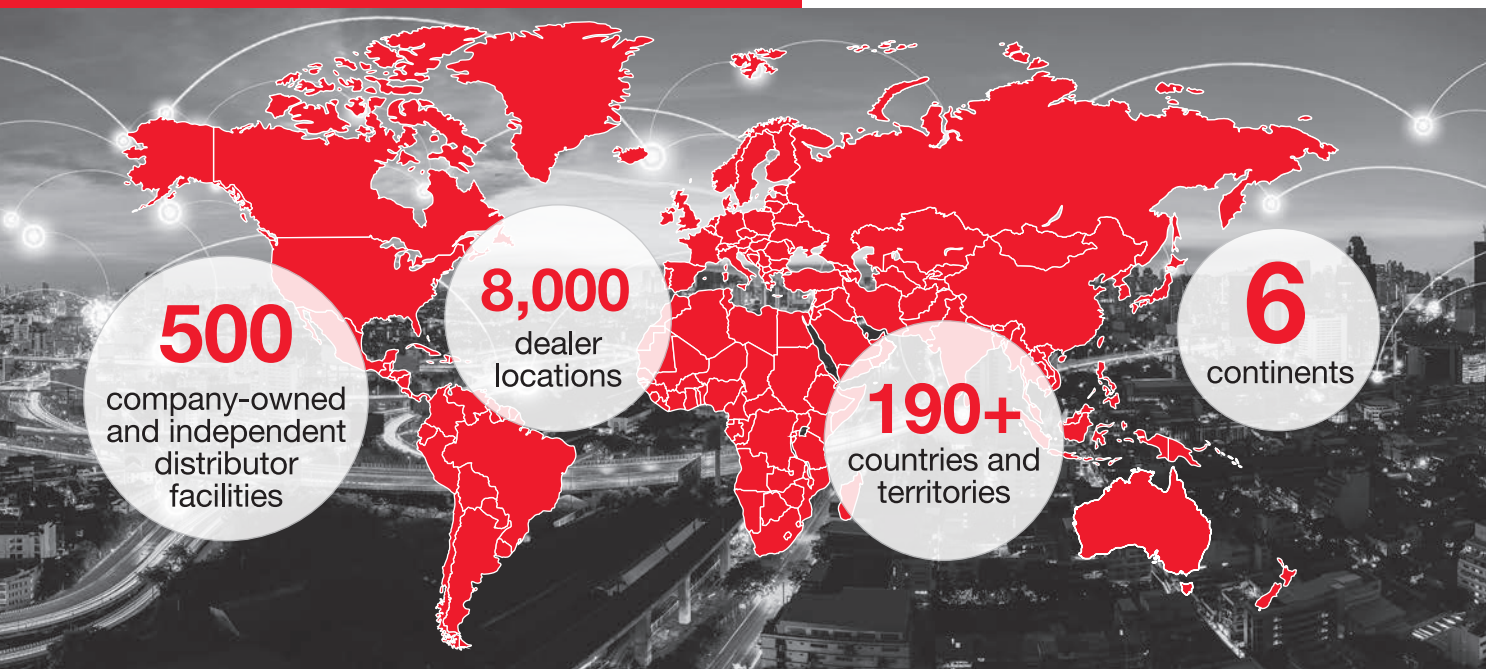
\* Models listed are natural gas unless stated as propane  
+ EPA Stationary Non-Emergency



# WORLD-CLASS SERVICE AND SUPPORT NETWORK.

**OVER 8,000 DISTRIBUTOR AND  
DEALER LOCATIONS IN MORE  
THAN 190 COUNTRIES**

No matter where you are, your local Cummins distributor or dealer is your first line of support for everything from application assistance and on-site commissioning to troubleshooting, maintenance and aftermarket services: Powering a world that's Always On.



**Cummins Inc.**  
Box 3005  
Columbus, IN 47202-3005  
U.S.A.

1-800-CUMMINS™ (1-800-286-6467)  
cummins.com

Bulletin 5600499 Printed in U.S.A. 3/20  
©2020 Cummins Inc.