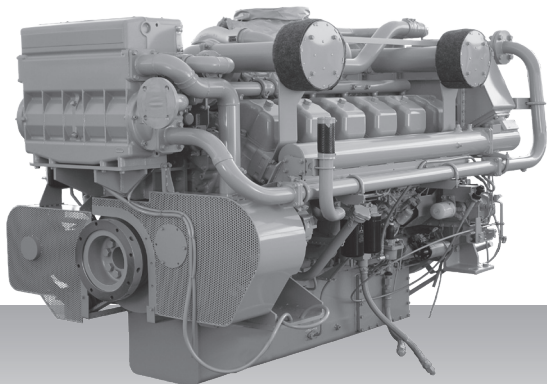


**Propulsion - IMO Tier II / CCNR-2 / EU-3A**  
**High speed - Propulsion package**

# S12A2-T2MPTK



12-cylinder, 4-cycle, water cooled diesel engine,  
with direct-injection, turbocharger, air-cooler,  
built-up heat exchanger and sea water pump.

Bore x stroke (mm) : 150 x 160

Displacement (l) : 33.93

## Commercial rating

kW	bhp	rpm	Rating	Fuel cons. l/hr*	Emission
701	940	1,800	UCD	121.9	IMO-T2
776	1,041	1,860	HD	134.4	IMO-T2
858	1,151	1,920	MD	150.1	IMO-T2

\*Average fuel consumption according to ISO, see page 6.  
Specifications / data subject to change without prior notice.

## Product dimensions & dry weight

L (mm) : 2,439

W (mm) : 1,482

H (mm) : 1,596

Dry weight (kg) : 3,820

Dimensions and weight are based on standard configuration.