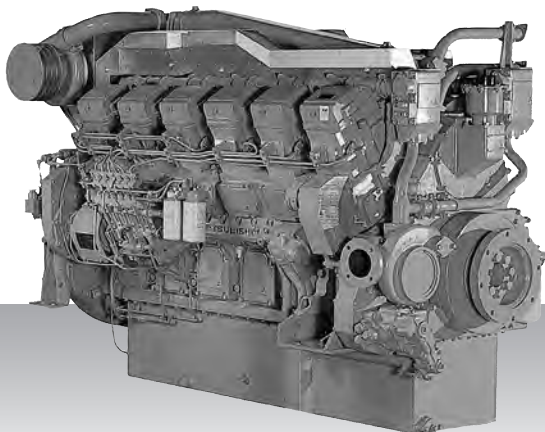


Propulsion - IMO Tier I / non emission
High speed - Engine

S12R-MPTK



12-cylinder, 4-cycle, water cooled diesel engine,
with direct-injection, turbocharger and air-cooler.

Bore x stroke (mm) : 170 x 180

Displacement (l) : 49.03

Commercial rating

kW	bhp	rpm	Rating	Fuel cons. l/hr*	Emission
940	1,261	1,600	UCD	158.0	IMO-T1
1,040	1,395	1,650	HD	176.5	IMO-T1
1,210	1,623	1,800	MD	202.9	IMO-T1

*Average fuel consumption according to ISO, see page 6.
Specifications / data subject to change without prior notice.

Product dimensions & dry weight

L (mm) : 2,376

W (mm) : 1,512

H (mm) : 1,731

Dry weight (kg) : 5,320

Dimensions and weight are based on standard configuration.