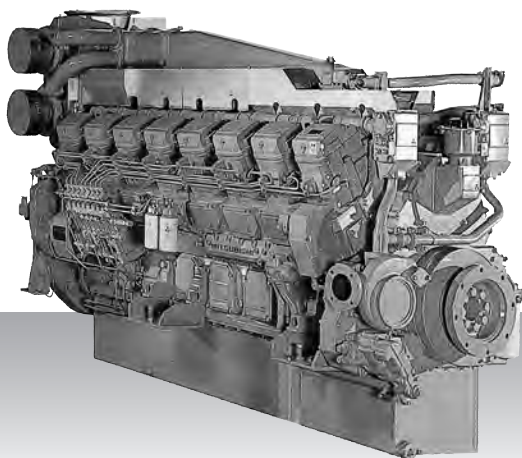


Propulsion - IMO Tier I / non emission
High speed - Engine

S16R-MPTK



16-cylinder, 4-cycle, water cooled diesel engine,
with direct-injection, turbocharger and air-cooler.

Bore x stroke (mm) : 170 x 180

Displacement (l) : 65.37

Commercial rating

kW	bhp	rpm	Rating	Fuel cons. l/hr*	Emission
1,250	1,676	1,600	UCD	206.0	IMO-T1
1,380	1,851	1,650	HD	234.4	IMO-T1
1,610	2,159	1,800	MD	268.7	IMO-T1

*Average fuel consumption according to ISO, see page 6.
Specifications / data subject to change without prior notice.

Product dimensions & dry weight

L (mm) : 2,931

W (mm) : 1,512

H (mm) : 1,960

Dry weight (kg) : 6,780

Dimensions and weight are based on standard configuration.