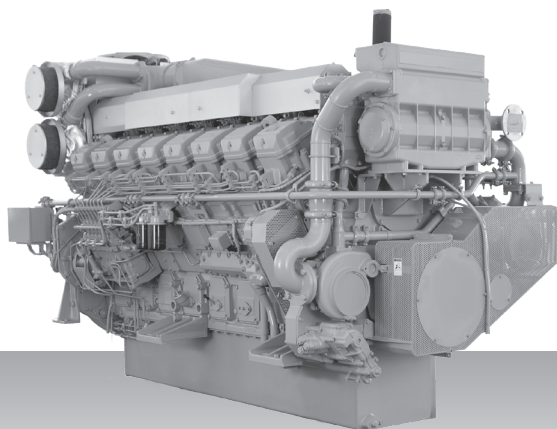


Propulsion - IMO Tier II / CCNR-2 / EU-3A  
High speed - Propulsion package

# S16R-T2MPTK



16-cylinder, 4-cycle, water cooled diesel engine, with direct-injection, turbocharger, air-cooler, built-up heat exchanger and sea water pump.

Bore x stroke (mm) : 170 x 180

Displacement (l) : 65.37

## Commercial rating

kW	bhp	rpm	Rating	Fuel cons. l/hr*	Emission
1,250	1,676	1,600	UCD	207.3	IMO-T2
1,380	1,851	1,650	HD	229.5	IMO-T2
1,610	2,159	1,800	MD	271.7	IMO-T2

\*Average fuel consumption according to ISO, see page 6.  
Specifications / data subject to change without prior notice.

## Product dimensions & dry weight

L (mm) : 3,086

W (mm) : 1,622

H (mm) : 1,960

Dry weight (kg) : 7,000

Dimensions and weight are based on standard configuration.