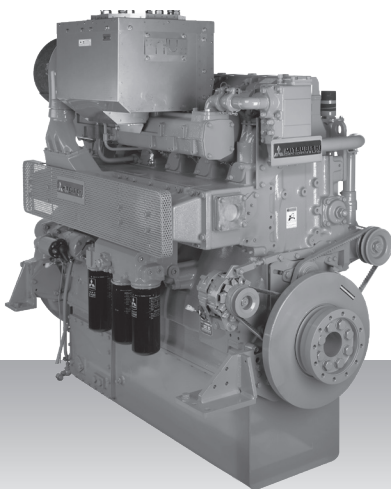


Propulsion - IMO Tier II / CCNR-2 / EU-3A
High speed - Engine

S6R-(Z3)MPTAW



6-cylinder, 4-cycle, water cooled diesel engine,
with direct-injection, turbocharger and air-cooler.

Bore x stroke (mm) : 170 x 180

Displacement (l) : 24.51

Commercial rating

kW	bhp	rpm	Rating	Fuel cons. l/hr*	Emission
324	434	1,600	UCD	on request	IMO-T2
447	599	1,600	UCD	on request	IMO-T2
470	630	1,600	UCD	80.5	IMO-T2 / EU-3A
520	697	1,650	HD	89.0	IMO-T2 / EU-3A
605	811	1,800	MD	on request	IMO-T2 / EU-3A

*Average fuel consumption according to ISO, see page 6.

Specifications / data subject to change without prior notice.

Product dimensions & dry weight

L (mm) : 1,786

W (mm) : 1,220

H (mm) : 1,650

Dry weight (kg) : 2,913

Dimensions and weight are based on standard configuration.