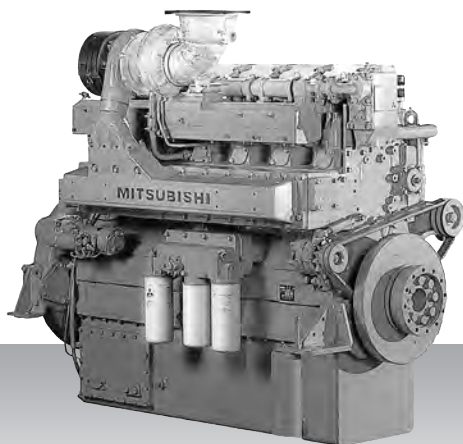


Propulsion - IMO Tier I / non emission  
High speed - Engine

# S6R2-MPTK



6-cylinder, 4-cycle, water cooled diesel engine,  
with direct-injection, turbocharger and air-cooler.

Bore x stroke (mm) : 170 x 220

Displacement (l) : 29.96

## Commercial rating

kW	bhp	rpm	Rating	Fuel cons. l/hr*	Emission
480	644	1,350	UCD	78.9	IMO-T1
530	711	1,400	HD	86.6	IMO-T1
610	818	1,500	MD	100.4	IMO-T1

\*Average fuel consumption according to ISO, see page 6.  
Specifications / data subject to change without prior notice.

## Product dimensions & dry weight

L (mm) : 1,811

W (mm) : 1,108

H (mm) : 1,694

Dry weight (kg) : 2,960

Dimensions and weight are based on standard configuration.