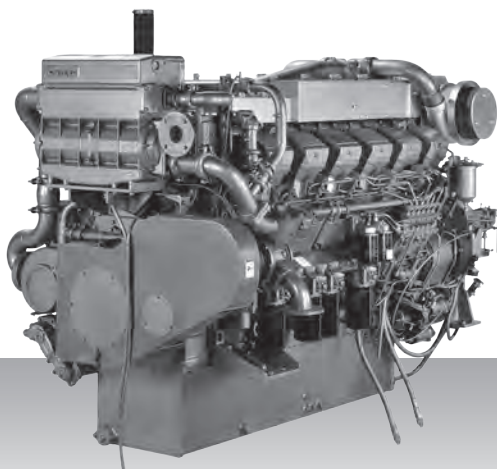


Propulsion - IMO Tier II / CCNR-2 / EU-3A
High speed - Propulsion package

S12R-T2MPTK



12-cylinder, 4-cycle, water cooled diesel engine,
with direct-injection, turbocharger, air-cooler,
built-up heat exchanger and sea water pump.

Bore x stroke (mm) : 170 x 180
Displacement (l) : 49.03

Commercial rating

kW	bhp	rpm	Rating	Fuel cons. l/hr*	Emission
940	1,261	1,600	UCD	155.9	IMO-T2
1,040	1,395	1,650	HD	173.0	IMO-T2
1,210	1,623	1,800	MD	203.6	IMO-T2

*Average fuel consumption according to ISO, see page 6.
Specifications / data subject to change without prior notice.

Product dimensions & dry weight

L (mm) : 2,556
W (mm) : 1,622
H (mm) : 1,728
Dry weight (kg) : 5,500

Dimensions and weight are based on standard configuration.