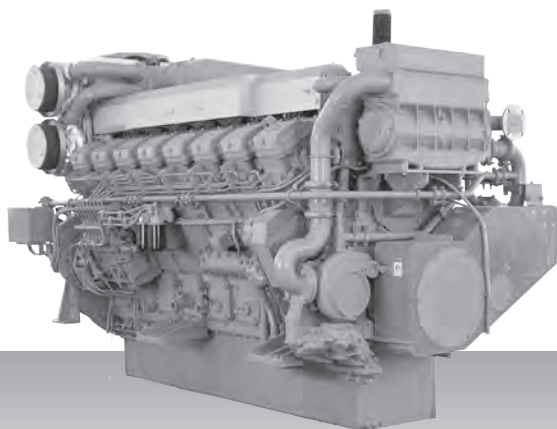


Propulsion - IMO Tier II / CCNR-2 / EU-3A  
High speed - Propulsion package

# S16R2-T2MPTK



16-cylinder, 4-cycle, water cooled diesel engine, with direct-injection, turbocharger, air-cooler, built-up heat exchanger and sea water pump.

Bore x stroke (mm) : 170 x 220

Displacement (l) : 79.90

## Commercial rating

kW	bhp	rpm	Rating	Fuel cons. l/hr*	Emission
1,450	1,944	1,350	UCD	on request	IMO-T2
1,600	2,156	1,400	HD	on request	IMO-T2
1,885	2,528	1,500	MD	on request	IMO-T2

\*Average fuel consumption according to ISO, see page 6.  
Specifications / data subject to change without prior notice.

## Product dimensions & dry weight

L (mm) : 3,065

W (mm) : 1,622

H (mm) : 2,030

Dry weight (kg) : 8,000

Dimensions and weight are based on standard configuration.