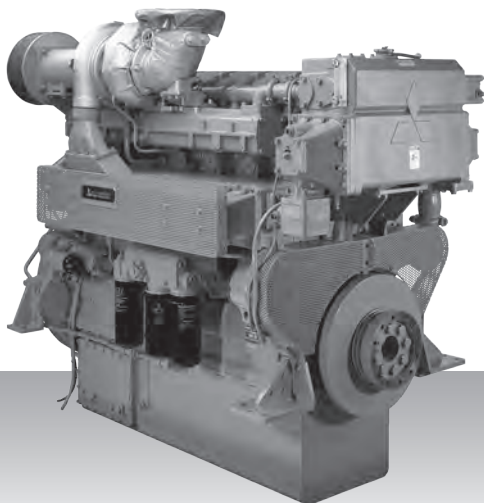


Propulsion - IMO Tier II / CCNR-2 / EU-3A
High speed - Propulsion package

S6R-T2MPTK



6-cylinder, 4-cycle, water cooled diesel engine,
with direct-injection, turbocharger, air-cooler,
built-up heat exchanger and sea water pump.

Bore x stroke (mm) : 170 x 180
Displacement (l) : 24.51

Commercial rating

kW	bhp	rpm	Rating	Fuel cons. l/hr*	Emission
470	630	1,600	UCD	79.6	IMO-T2
520	697	1,650	HD	88.6	IMO-T2
605	811	1,800	MD	103.8	IMO-T2

*Average fuel consumption according to ISO, see page 6.
Specifications / data subject to change without prior notice.

Product dimensions & dry weight

L (mm) : 2,122
W (mm) : 1,202
H (mm) : 1,615
Dry weight (kg) : 2,950

Dimensions and weight are based on standard configuration.