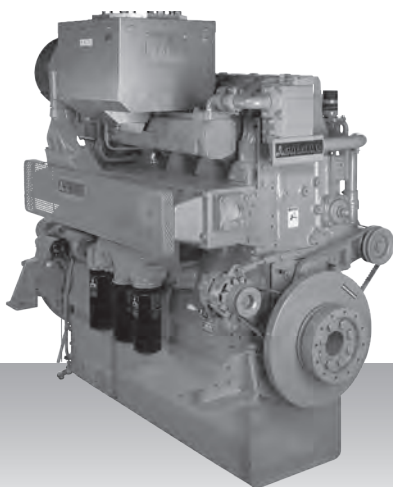


Propulsion - IMO Tier II / CCNR-2 / EU-3A
High speed - Engine

S6R2-T2MPTAW3M



6-cylinder, 4-cycle, water cooled diesel engine,
with direct-injection, turbocharger and air-cooler.

Bore x stroke (mm) : 170 x 220

Displacement (l) : 29.96

Commercial rating

kW	bhp	rpm	Rating	Fuel cons. l/hr*	Emission
480	644	1,350	HD	81.5	IMO-T2
555	744	1,350	HD	96.5	IMO-T2
645	865	1,400	HD	on request	IMO-T2
691	927	1,406	HD	124.8	IMO-T2

*Average fuel consumption according to ISO, see page 6.
Specifications / data subject to change without prior notice.

Product dimensions & dry weight

L (mm) : 1,786

W (mm) : 1,220

H (mm) : 1,650

Dry weight (kg) : 2,913

Dimensions and weight are based on standard configuration.