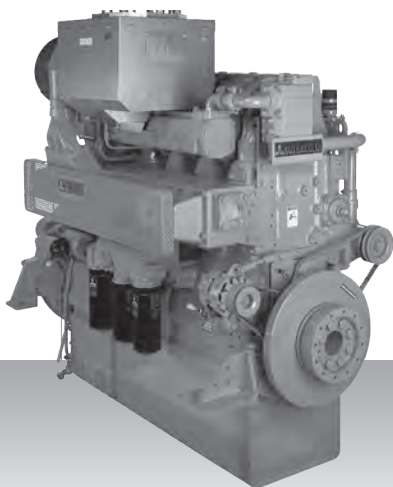


Propulsion - IMO Tier II / CCNR-2 / EU-3A
High speed - Engine

S6R2-T2MPTK



6-cylinder, 4-cycle, water cooled diesel engine,
with direct-injection, turbocharger and air-cooler.

Bore x stroke (mm) : 170 x 220

Displacement (l) : 29.96

Commercial rating

kW	bhp	rpm	Rating	Fuel cons. l/hr*	Emission
324	435	1,350	UCD	on request	IMO-T2
380	510	1,350	UCD	on request	IMO-T2
395	530	1,350	UCD	on request	IMO-T2
423	567	1,350	UCD	on request	IMO-T2
480	644	1,350	UCD	79.9	IMO-T2
530	711	1,400	HD	88.7	IMO-T2
610	818	1,500	MD	101.5	IMO-T2

*Average fuel consumption according to ISO, see page 6.

Specifications / data subject to change without prior notice.

Product dimensions & dry weight

L (mm) : 2,207

W (mm) : 1,156

H (mm) : 1,695

Dry weight (kg) : 3,000

Dimensions and weight are based on standard configuration.