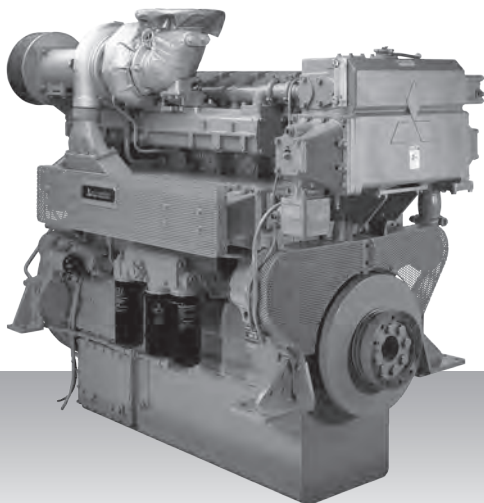


Propulsion - IMO Tier II / CCNR-2 / EU-3A  
High speed - Propulsion package

# S6R2-T2MPTK3



6-cylinder, 4-cycle, water cooled diesel engine,  
with direct-injection, turbocharger, air-cooler,  
built-up heat exchanger and sea water pump.

Bore x stroke (mm) : 170 x 220  
Displacement (l) : 29.96

## Commercial rating

kW	bhp	rpm	Rating	Fuel cons. l/hr*	Emission
691	927	1,406	HD	112.7	IMO-T2
759	1,018	1,406	MD	122.3	IMO-T2

\*Average fuel consumption according to ISO, see page 6.  
Specifications / data subject to change without prior notice.

## Product dimensions & dry weight

L (mm) : 2,105  
W (mm) : 1,183  
H (mm) : 1,695  
Dry weight (kg) : 3,130

Dimensions and weight are based on standard configuration.