



# 6HA2M-WHT

**H-rating** 204kW (278mhp)  
**M-rating** 257kW (350mhp)



- 6-cylinder, direct injection, heat exchanger cooling.
- Turbocharger + intercooler models.
- Available either with marine gear or without marine gear.
- Conform to IMO Tier II emissions regulations.

## Specifications

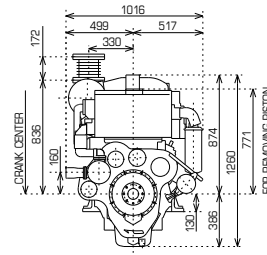
Model	6HA2M-WHT	
Number of cylinders	6 in-line	
Bore × stroke	mm	130 × 165
Displacement	lit.	13.140
Rated output	kW(hp)/rpm	H : 204(278)/1880 M : 257(350)/1950
Combustion system	Direct injection	
Aspiration	Turbocharger + intercooler	
Starting system	Electric starting motor (24V 6.0kW)	
Cooling system	Heat exchanger	
Size of flywheel housing and flywheel	SAE #1 and 14 in.	
Dry mass (without marine gear)	kg	1455
Dimensions (L×W×H)	mm	1585×1016×1260

## Marine gear specifications

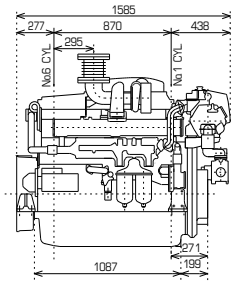
Engine model : 6HA2M-WHT						
Model	YX120			YX120L		
Type	Hydraulic multi-disc clutch					
Reduction ratio (Ahead)	2.03	2.57	3.04	3.55	4.00	4.59
Direction of rotation (propeller shaft)	Clockwise or counterclockwise					
Dry weight	kg	315		411		

## Dimensions Unit:mm

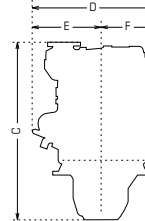
Engine only / Front view



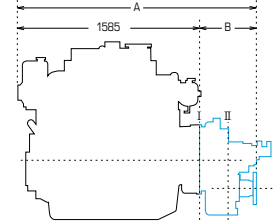
Engine only / Right side view



With YX120L gearbox / Front view



With YX120L gearbox / Left side view



Model	A	B	C	D	E	F
6HA2M-WHT×YX-120	2005	420	1272	1016	499	517
6HA2M-WHT×YX-120L	2039	454	1384	1016	499	517

— Marine gear

## Performance curves

