

Marine Transmission

TK 600 S-1 / 620



STANDARD SCOPE

SAE housing no. 1
 Flexible coupling for 14"/18" flywheel
 Mechanical control valve
 Oil strainer
 Trolling valve (mechanical or electrical)
 Oil filter mounted
 Oil cooler with thermostatic bypass valve
 Companion flange/bolts set
 Mounting brackets
 Shaft with key



Available Ratio's: 1.97, 2.53, 2.75, 3.04, 3.42
Max Input Torque 600 S-1: 197.8 (Kgf.m)
Max Input Torque 620: 222.81 / 206.9 (Kgf.m)
Dry Weight 600-S1 / 620: 420 kg / 425 kg

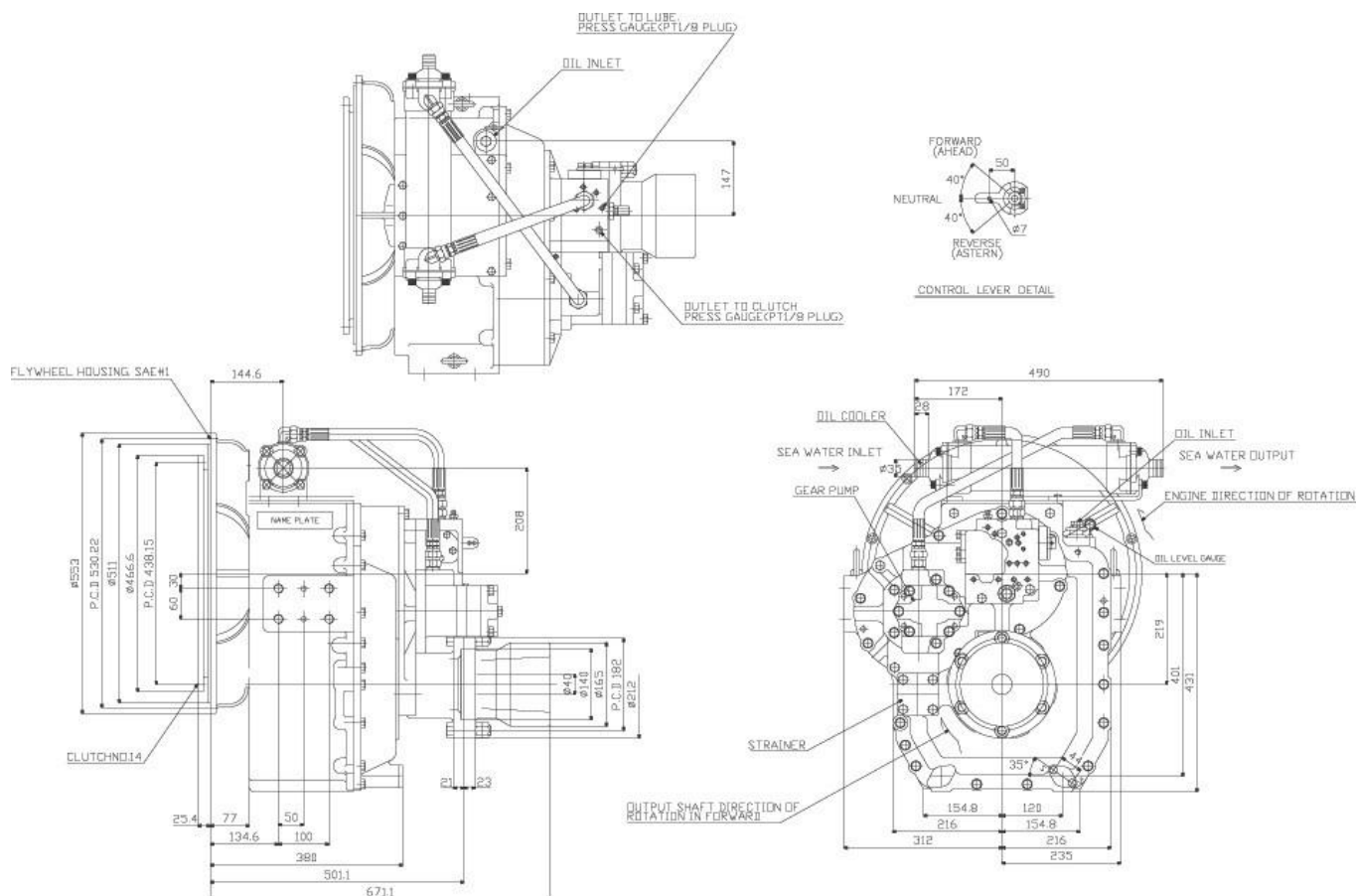
ADVANTAGES OF TK 600 S-1 / 620

- 01** Greater durability through change of the rubber block made of special material.
- 02** Hydraulic clutch can be easily handled outside.
- 03** Control system fitted for a small-size ship and high speed
- 04** Guaranteed durability.

CHARACTERISTICS OF SPECIFICATIONS IN KILOWATS (KW) (HORSEPOWER (HP))

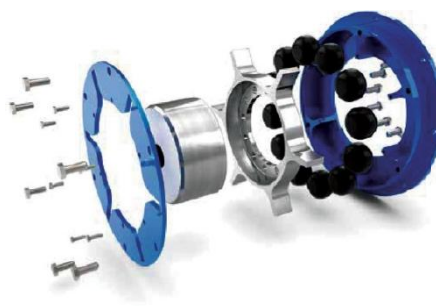
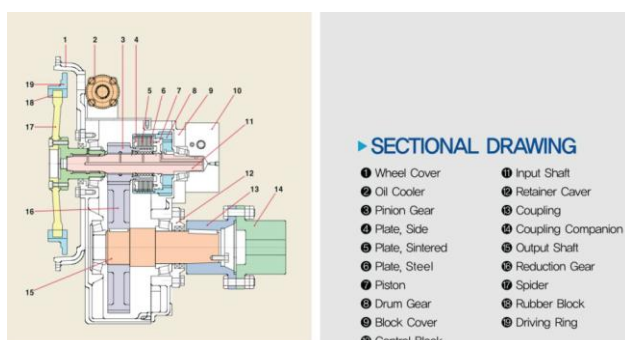
| Model | Reduction Ratio | Max. Input Speed (rpm) | Max. Input Torque (Kgf.m) | INPUT RATING | | | | | | | | | Dry Weight (Kg) | Flywheel Housing (SAE No.) | Flywheel (Clutch No.) |
|----------------|-------------------------------------|------------------------|---------------------------|--------------|------------|------------|------------|------------|------------|------------|------------|------------|-----------------|----------------------------|-----------------------|
| | | | | 1600 rpm | | | 1800 rpm | | | 2100 rpm | | | | | |
| | | | | KW | HP | PS | KW | HP | PS | KW | HP | PS | | | |
| 600 S-1 | 1.97, 2.53, 2.75 3.04, 3.42 | 2600 | 197.8 | 325 | 435 | 442 | 365 | 490 | 497 | 426 | 571 | 580 | 420 | #0 / #1 | 14/18 |
| 620 | 1.97, 2.53, <u>2.75, 3.04, 3.42</u> | | 222.81 206.9 | 366 340 | 490 456 | 497 462 | 412 383 | 552 513 | 560 520 | 480 446 | 644 598 | 653 606 | 425 | | |

Marine Transmission TK 600 S-1 / 620



PRECAUTIONS

- Align the center of engine with marine gear (for greater effectiveness and longer lifespan).
- Install the supporting bracket of marine gear.
- When assembling flange on output shaft of marine gear, be sure to align another flange accurately.
- Make sure to wash flywheel housing cover if dust should accumulate.
- When installing the cable and the remotecontrol level, check to make sure the marine gear level is smooth.
- The oil with the viscosity equivalent to SAE#30 is recommended.
- Check the oil amount of oil before sailing.
- After 100 hours of operation check the oil, and then change every 1,000 hours.



ADVANTAGES OF FLEXIBLE COUPLING

- 01 Plug-in Connection
- 02 Heat-Resistant up to 130°C
- 03 Fail-safe solution
- 04 Lubrication free
- 05 Rubber block solution