

# MAS 675 - S6R2 MPTA

## Fuel System

Fuel feed pump  
Change over type fuel filters  
Fuel injection pump  
Shielded fuel injection lines

## Lubricating Oil System

Oil pressure alarm switch  
Full-flow lubricating oil filters (change over type)  
By-pass filter (change over type)  
Oil cooler with thermostat

## Cooling System

Fresh water pump  
Thermostats with by-pass

## Electric System

Starter motor  
Alternator 30 Amps

## Inlet and Exhaust System

Turbo chargers MITSUBISHI  
Inlet air main fold with air cleaner  
Dry type exhaust main fold with vertical outlet, counter flange

## Other Standard Equipment

Hydraulic governor  
Mounting brackets

## Alternator

Stamford type HMC  
Engine and alternator are mounted on a welded steel base frame, installed on vibration dampers

## TECHNICAL DATA

Power	Cylinders	Diameter x Bore	Total Cylinder Capacity	Injection System	Starting System	Fly head	Dry Weight
50 Hz –711 Kva –1500 Rpm 60 Hz –576 Kva –1200 Rpm	6 cylinders	170x220 mm	30.0 liters	Direct	24 Volts bi-polar	SAE 18 / SAE 1	5800 kg

## Options

### Classification

BV, LRS, DNV classification (and other). IMO classification

### Engine cooling system

Heat exchanger fresh water / raw water (turbo lair or combined)  
Plate cooler  
Box cooler  
Keel cooling  
Mounted seawater pump  
Electric seawater pump

### Exhaust

Flexible expansion joint  
Silencer 22 db or 35 db or others  
Spark-arrestor

### Lubricating oil system

Manual oil drain pump  
Electric oil drain pump  
Pre-lubricating pump  
Emergency oil pump

### starting system

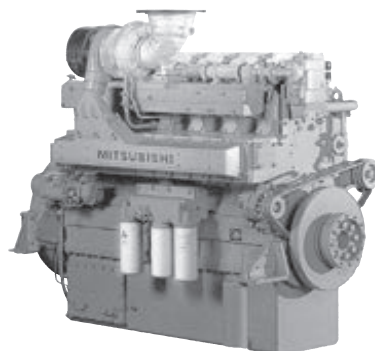
Air starting  
Electric compressor set  
Air / electrical combined starting

### Instrumental panel

Single- or multi-stations  
Mechanical or electronic remote control

### Alternator

Other brands like LEROY SOMER, etc...



**S6R2-MPTA** 6-cylinder, 4-cycle, Water cooled, Diesel Engine Direct-injection, Turbocharged with Air-cooler Mechanical governor

Bore x Stroke (mm) : 170 x 220  
Displacement (L) : 29.96

