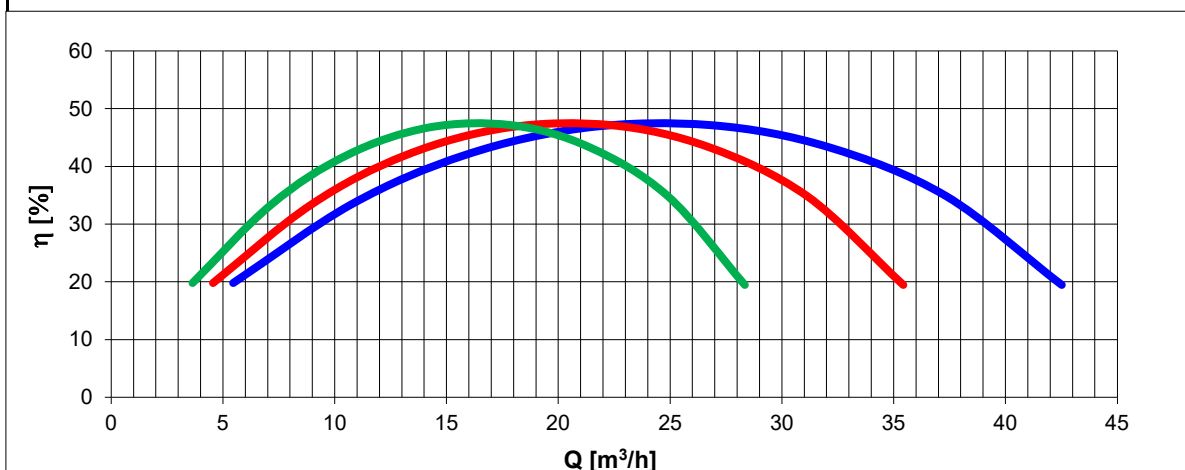
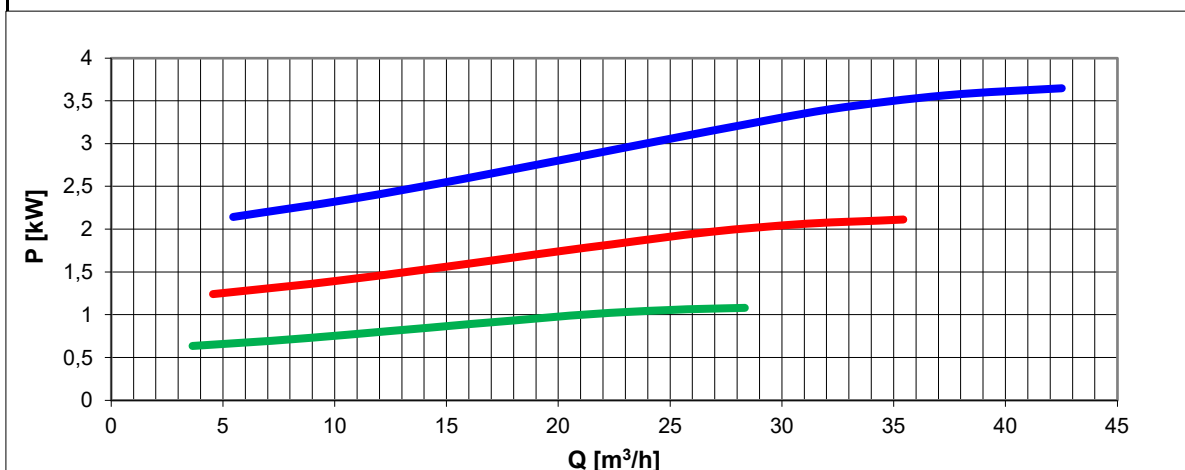
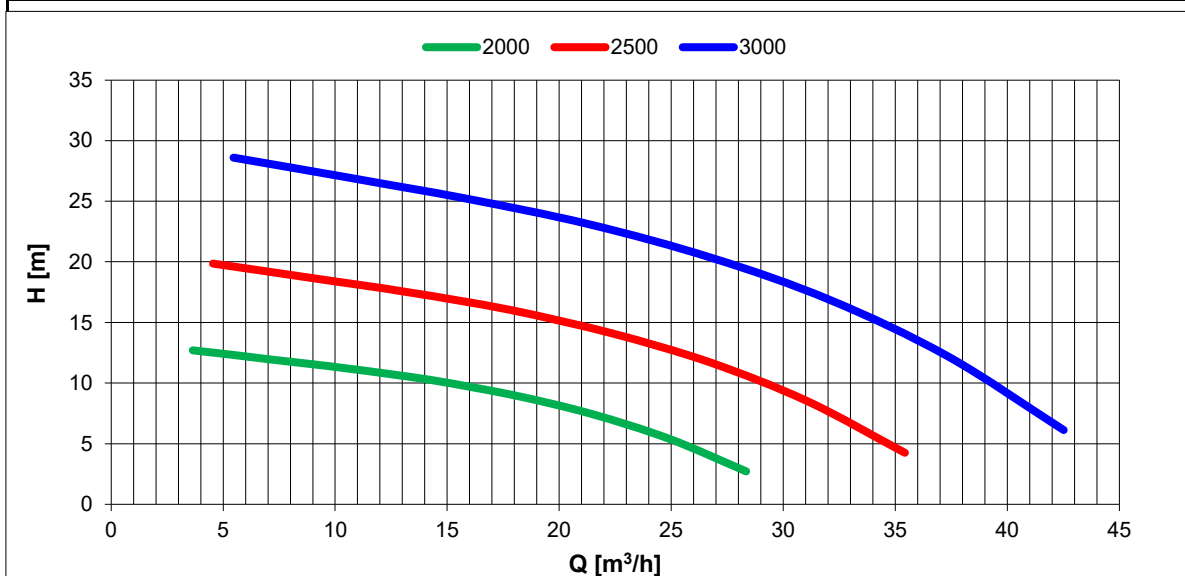
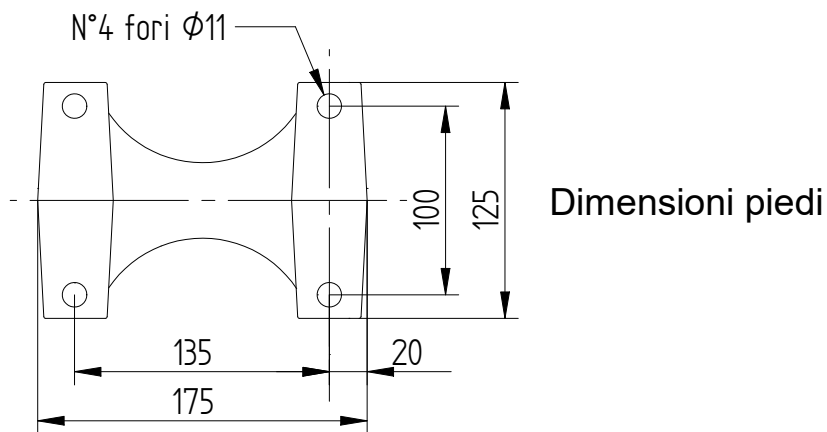
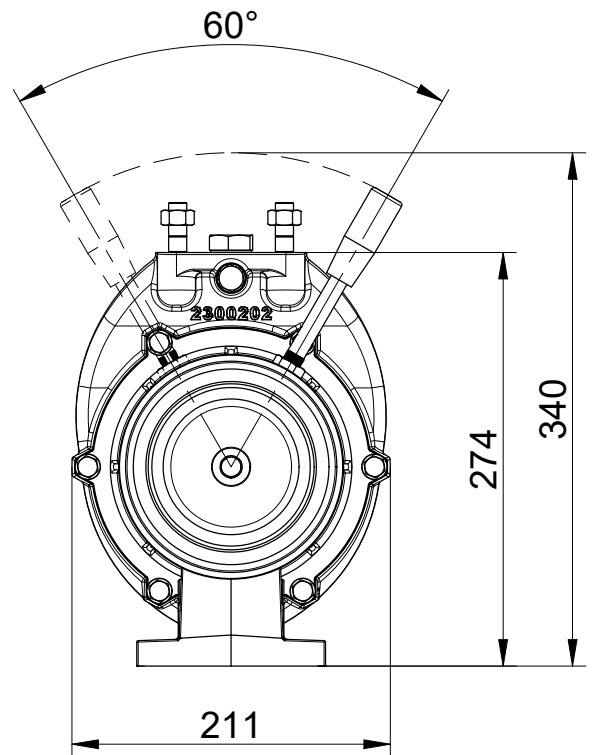
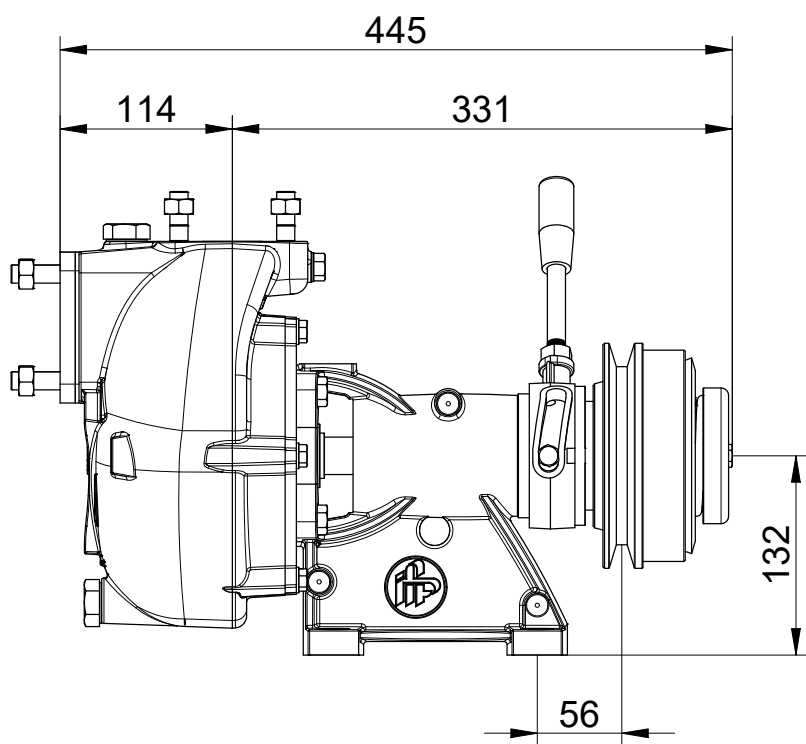
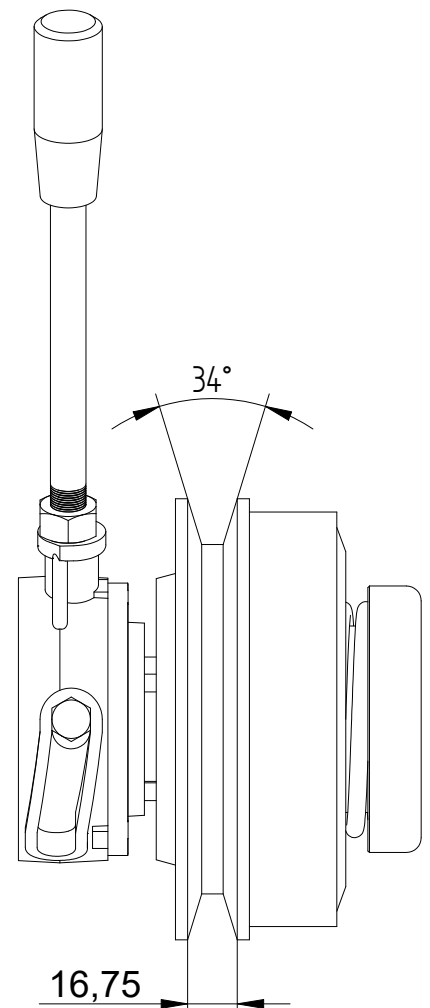


Tolleranze secondo ISO 2548 classe C	Autoinnescante/Selfpriming	Tolerances according ISO 2548 C class
Velocità di rotazione [giri/min]	2000-2500-3000	Rotating speed [rpm]
Densità dell'acqua alla prova	1000	kg/m ³ <i>Water density at test</i>
Passaggio corpi solidi (max diametro sfera)	9,5	mm <i>Solid handling (max.diameter sphere)</i>
Diametro girante	149,5	mm <i>Impeller diameter</i>
Inerzia delle masse rotanti (innesto inserito)	0,01441	Kgm ² <i>Inertia of rotating parts (engaged clutch)</i>
Forza richiesta per l'azionamento dell'innesto	250	N <i>Clutch engaging effort</i>
Altezza di innesco massima a 3000 giri/min	6	m <i>Maximum priming lift at 3000 rpm</i>



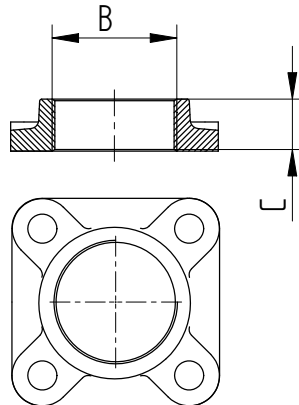
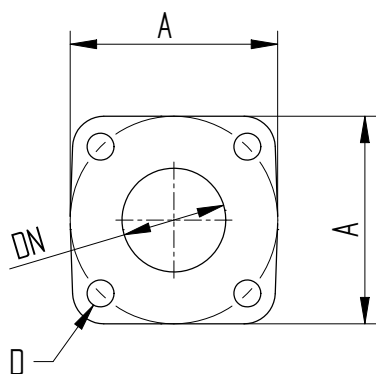


N°1 GOLE SEZ.B
DIAMETRO PRIMITIVO: Dp=140mm



Flange sulla pompa

Controflange filettate



	DN	A	B	C	D
Mandata	40	100	1"1/2	26	Prigioniero M12
Aspirazione	50	100	2"	30	Prigioniero M12

Massa della pompa Kg 33