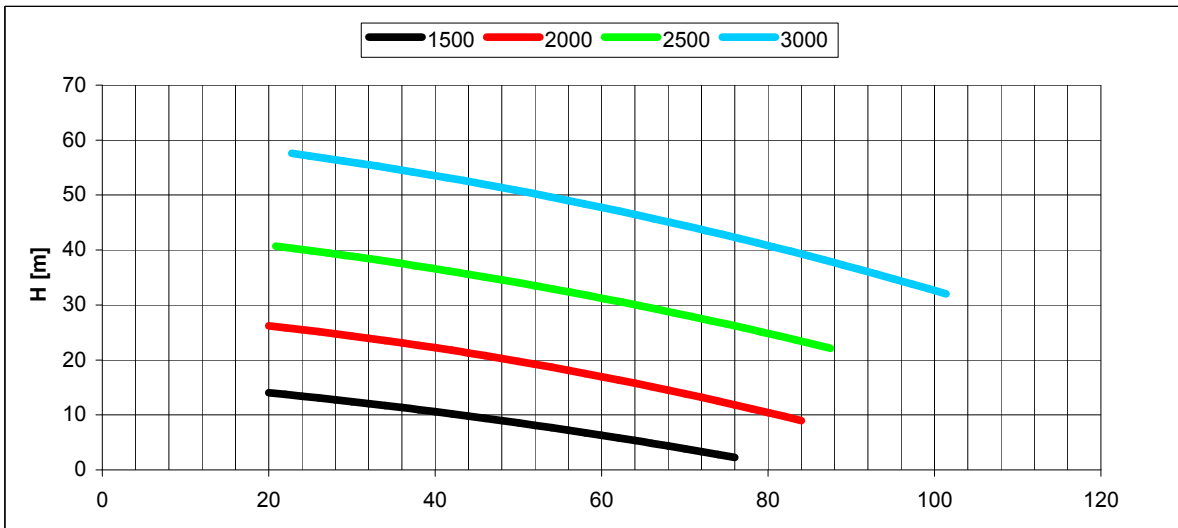
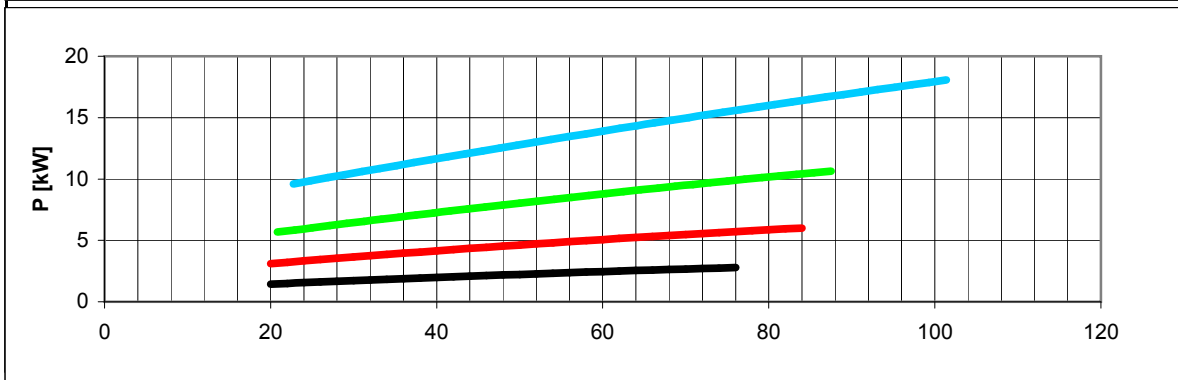


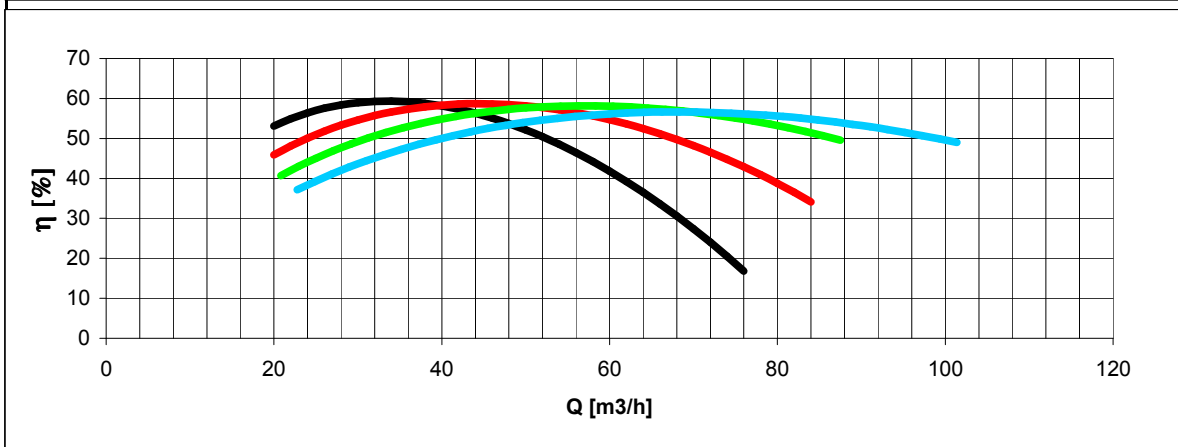
Tolleranze secondo ISO 2548 classe C	Autoinnescante/Selfpriming	Tolerances according ISO 2548 C class
Velocità di rotazione [giri/min]	1500-2000-2500-3000	Rotating speed [rpm]
Densità dell'acqua alla prova	1000	kg/m ³
Passaggio corpi solidi (max diametro sfera)	14	mm
Diametro girante	203	mm
Inerzia delle masse rotanti (innesto inserito)	-	Kgm ²
Forza richiesta per l'azionamento dell'innesto	-	N
Altezza di innesco massima a 3000 giri/min	8	m
		Water density at test
		Solid handling (max.diameter sphere)
		Impeller diameter
		Inerthia of rotating parts (engaged clutch)
		Clutch engaging effort
		Maximum priming lift at 3000 rpm



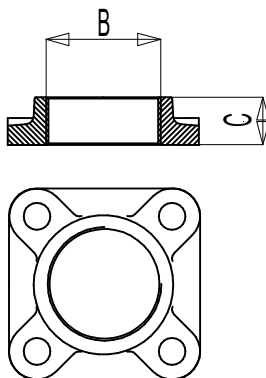
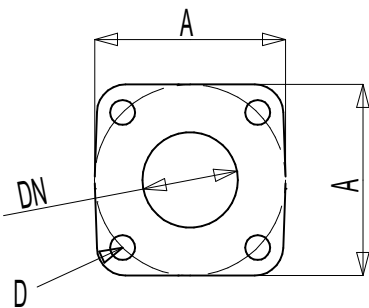
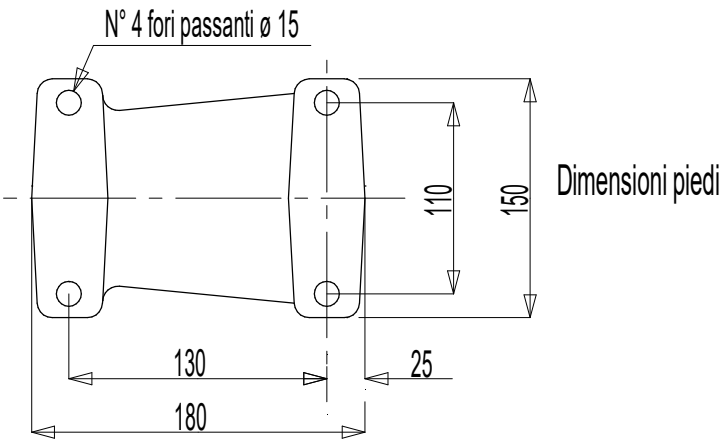
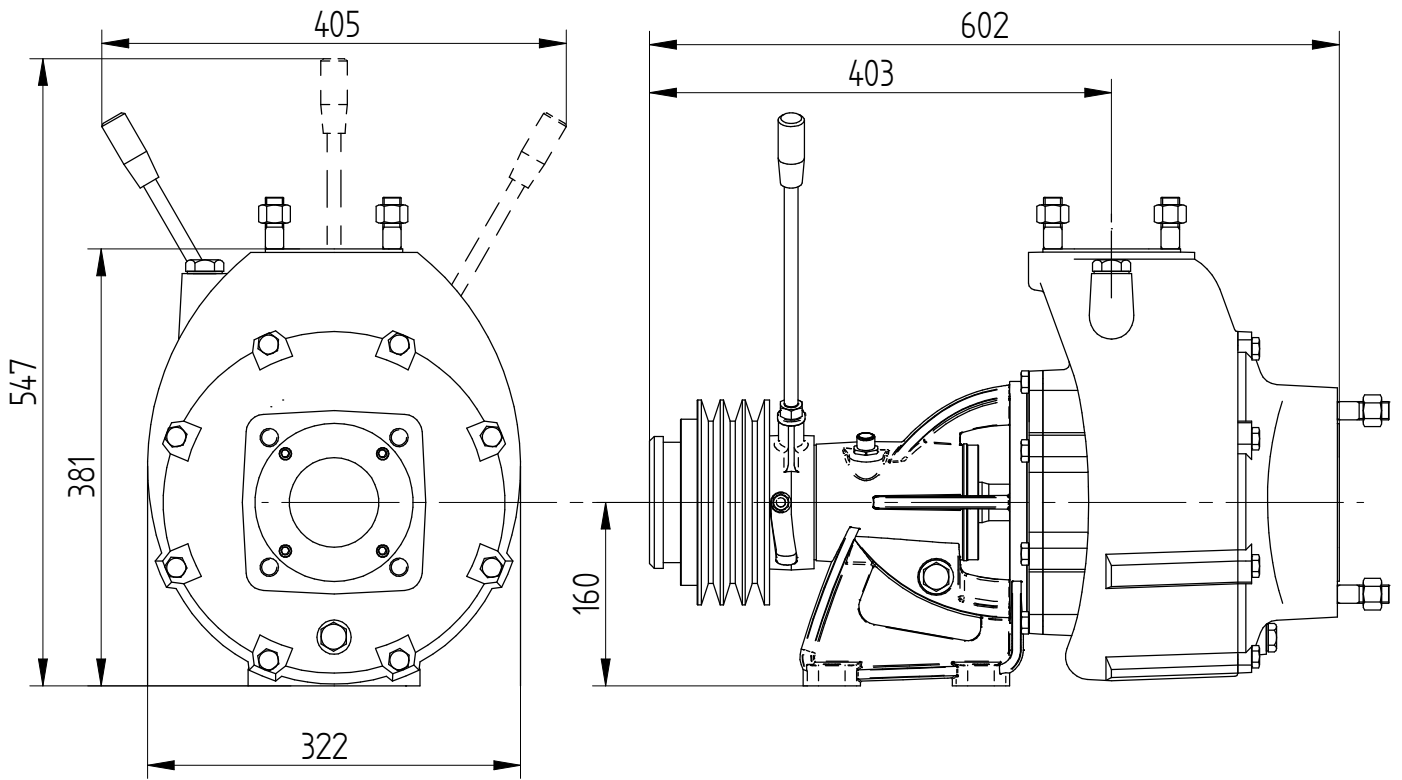
H(Q)
Prevalenza totale
Total head



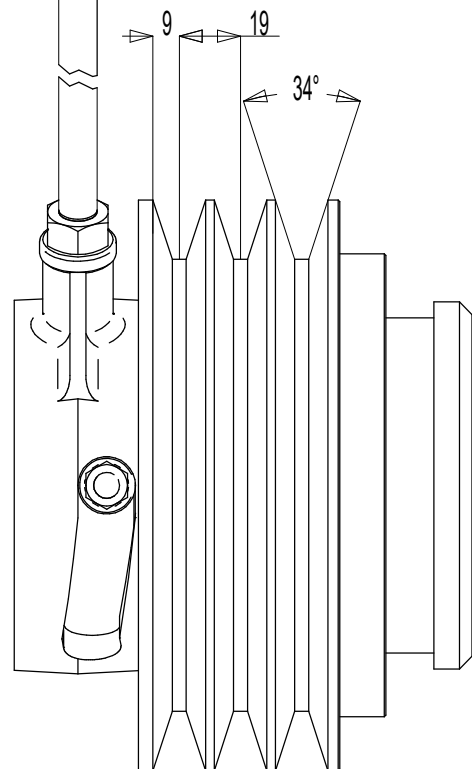
P(Q)
Potenza richiesta
Required power



η
Rendimento pompa
Pump efficiency



N°3 GOLE SEZ SPB
DIAMETRO PRIMITIVO: $D_p=170\text{mm}$



	DN	A	B	C	D
Mandata	65	145	2"-1/2	36	Prigioniero M16
Aspirazione	80	160	3"	40	Prigioniero M16

Massa della pompa Kg 94