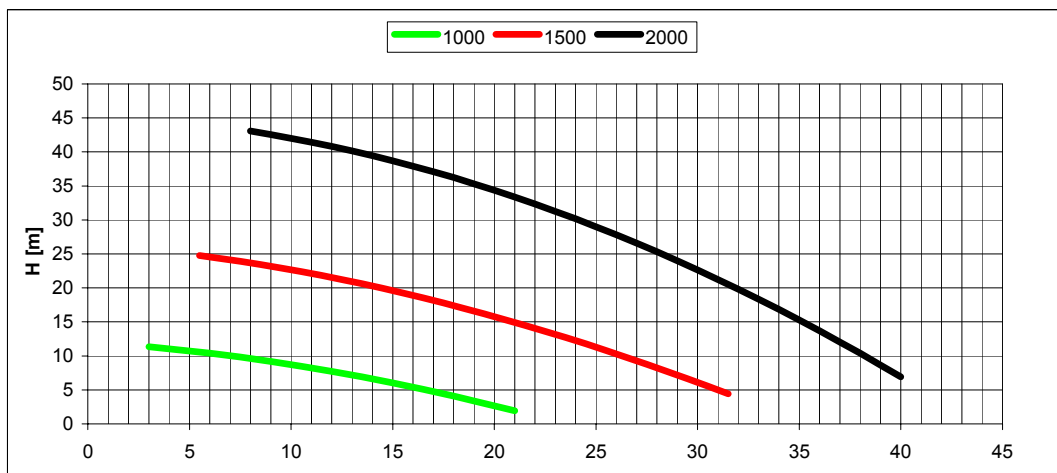
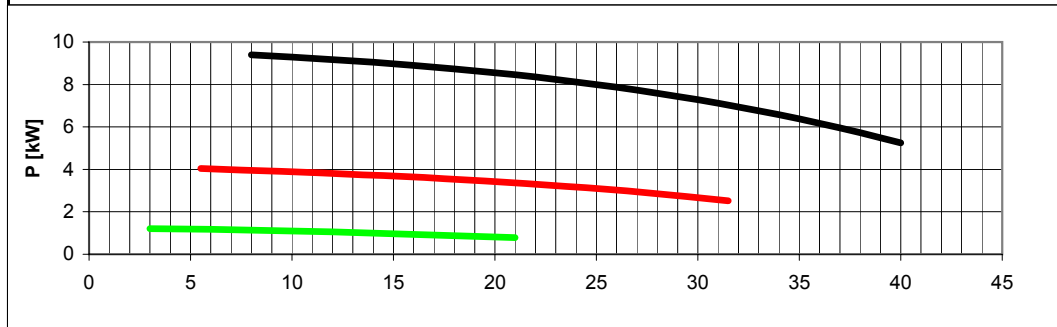


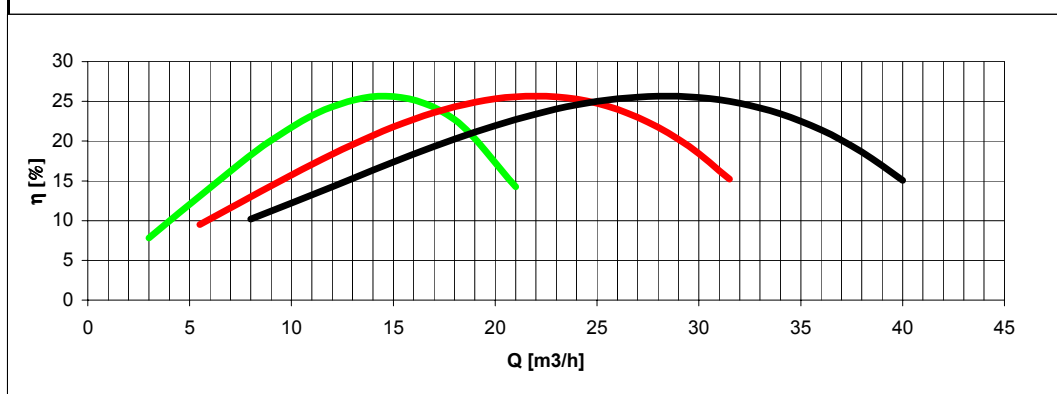
Tolleranze secondo ISO 2548 classe C	Autoinnescante/Selfpriming		Tolerances according ISO 2548 C class
Velocità di rotazione [giri/min]	1000-1500-2000		Rotating speed [rpm]
Densità dell'acqua alla prova	1000	kg/m ³	Water density at test
Passaggio corpi solidi (max diametro sfera)	ND	mm	Solid handling (max.diameter sphere)
Diametro girante	154	mm	Impeller diameter
Inerzia delle masse rotanti (innesto inserito)		mm	Inerthia of rotating parts (engaged clutch)
Forza richiesta per l'azionamento dell'innesto		N	Clutch engaging effort
Altezza di innesto massima a 2000 giri/min	6.5	m	Maximum priming lift at 2000 rpm
Massa della pompa	40	kg	Pump mass



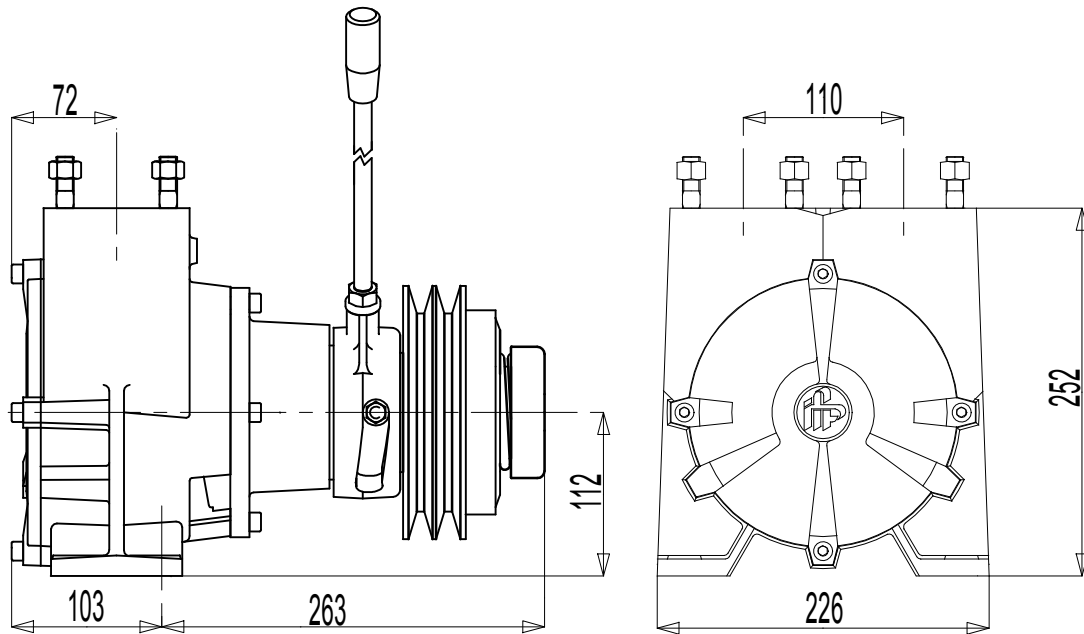
H(Q)
Prevalenza totale
Total head



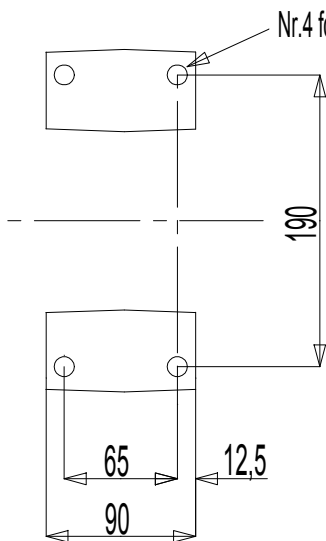
P(Q)
Potenza richiesta
Required power



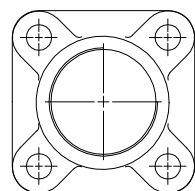
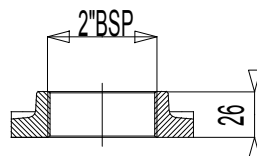
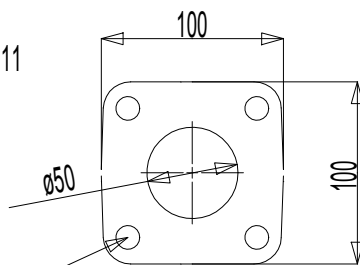
η
Rendimento pompa
Pump efficiency



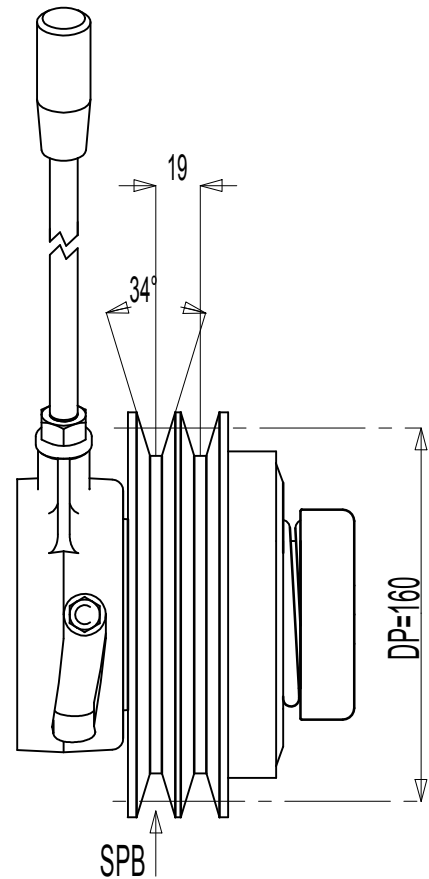
Dimensioni piedi



**Flangia aspirazione
Flangia mandata**



**Controflangia aspirazione
Controflangia mandata**



Massa della pompa Kg 39