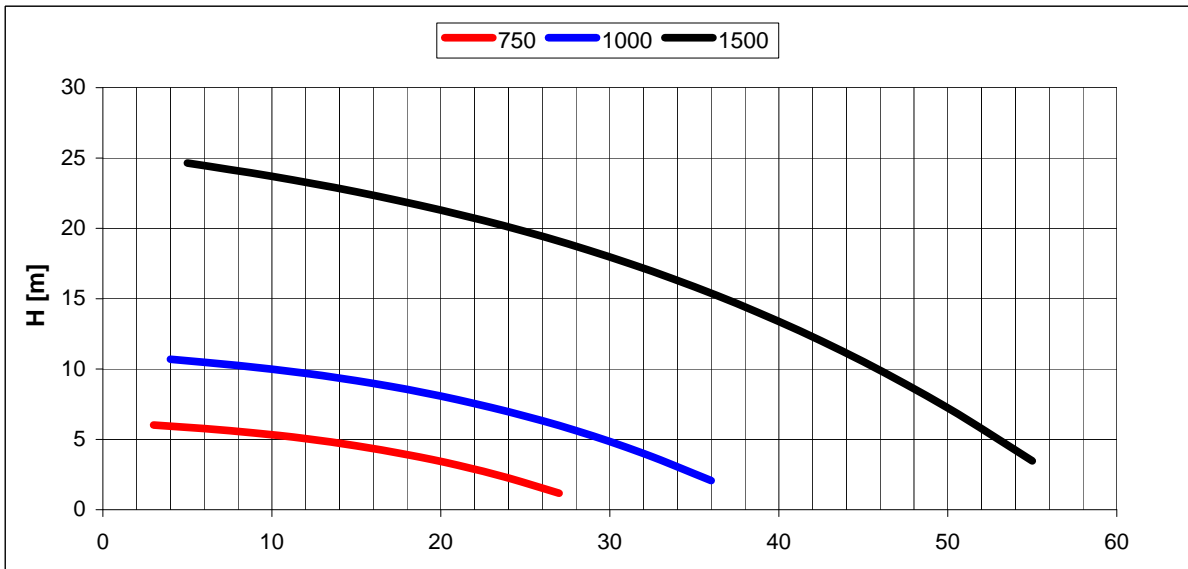
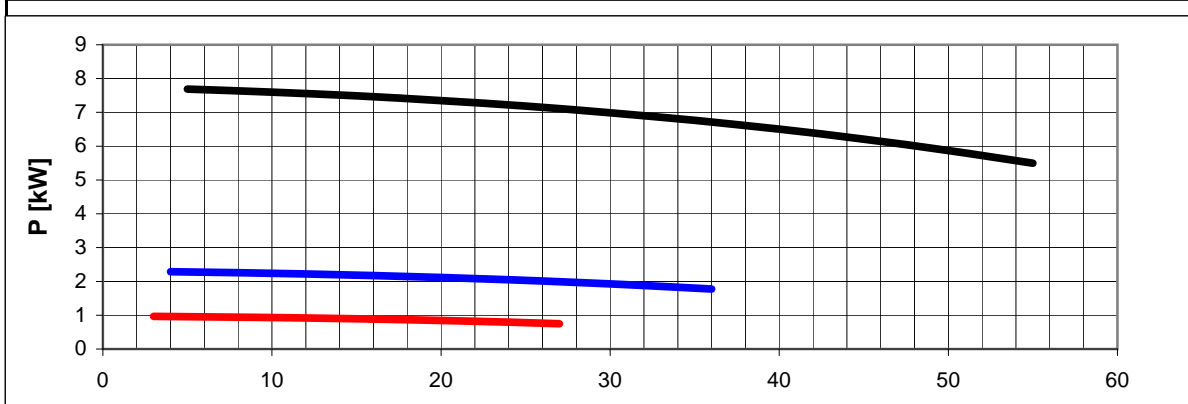


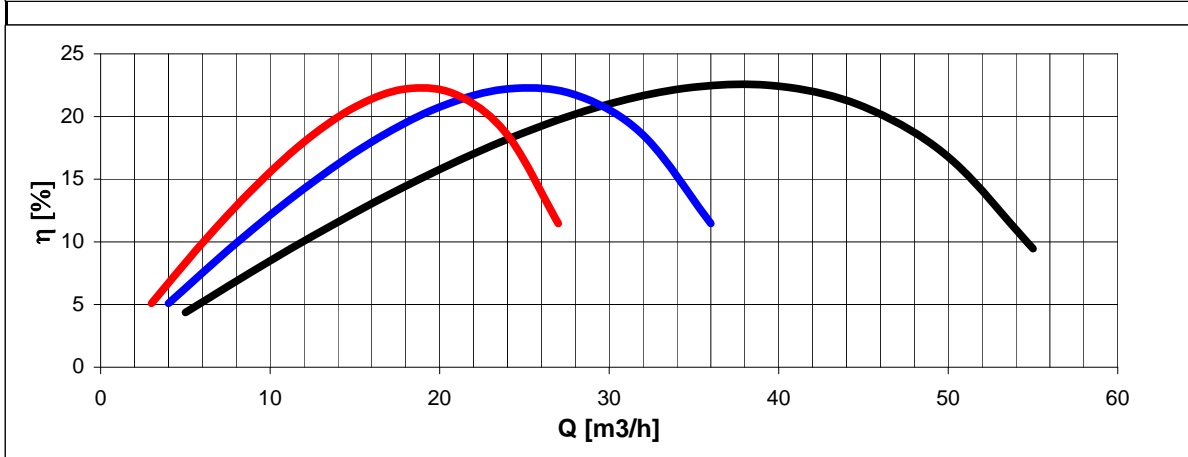
Tolleranze secondo ISO 2548 classe C	Autoinnescante/Selfpriming	Tolerances according ISO 2548 C class
Velocità di rotazione [giri/min]	750-1000-1500	Rotating speed [rpm]
Densità dell'acqua alla prova	1000	kg/m3
Passaggio corpi solidi (max diametro sfera)	-	mm
Diametro girante	180	mm
Inerzia delle masse rotanti (innesto inserito)	-	Kgm ²
Forza richiesta per l'azionamento dell'innesto	-	N
Altezza di innesco massima a 1500 giri/min	7	m



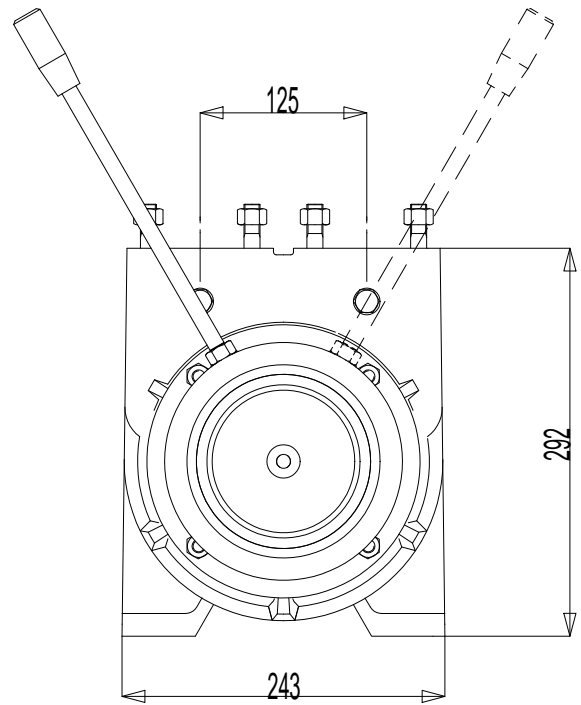
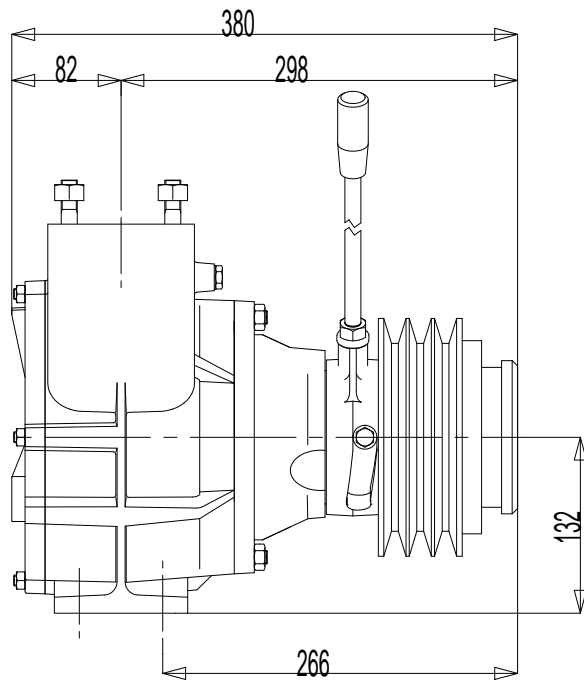
H(Q)
Prevalenza totale
Total head



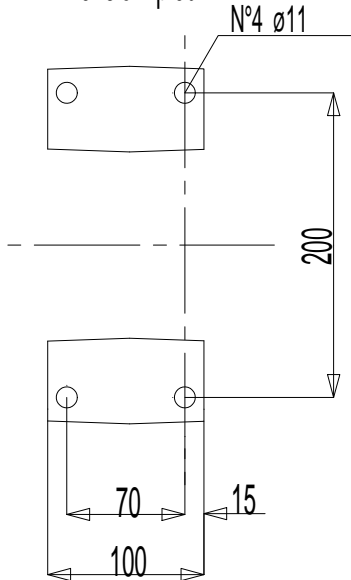
P(Q)
Potenza richiesta
Required power



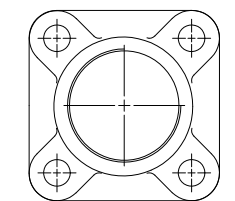
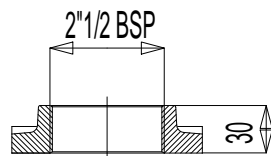
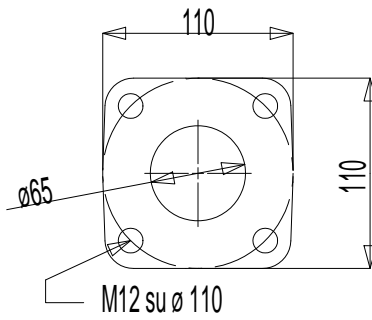
η
Rendimento pompa
Pump efficiency



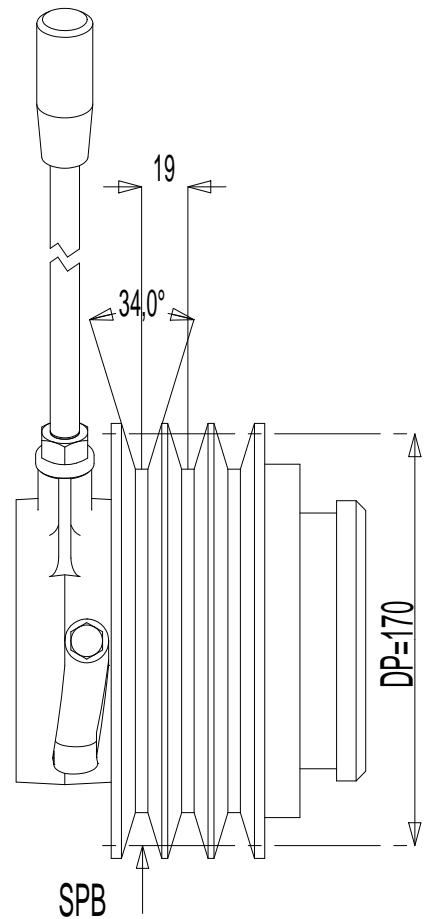
Dimensioni piedi



**Flangia aspirazione
Flangia mandata**



**Controflangia aspirazione
Controflangia mandata**



Massa della pompa Kg 58